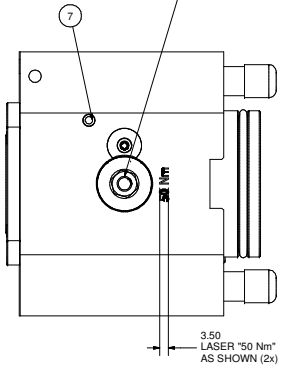


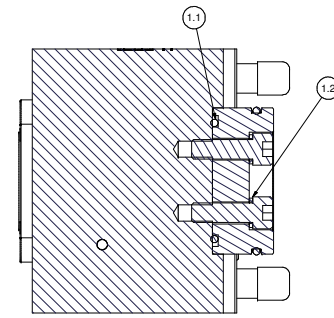
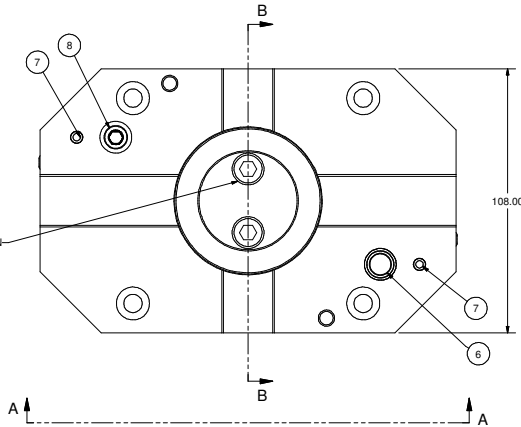
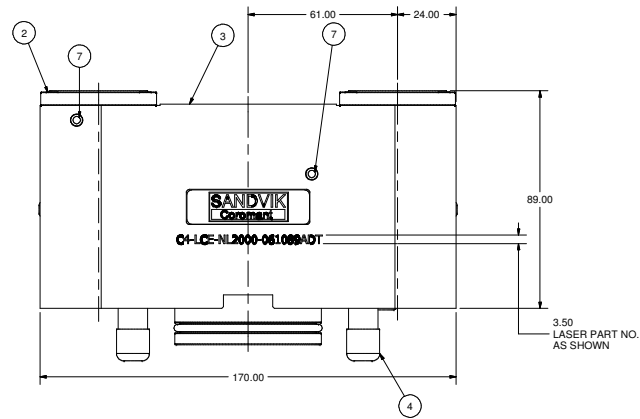
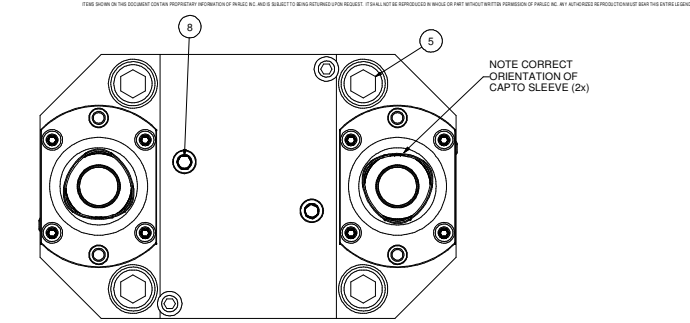


NOTES:
1. USE KOENIG SETTING TOOL MB-050 FOR INSTALLING PLUGS, ITEM 8.

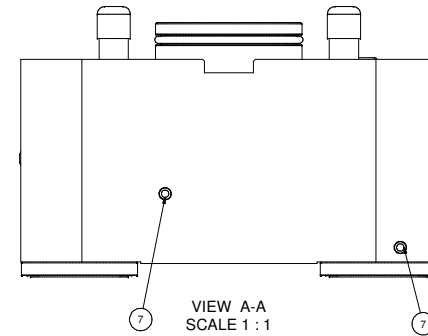
LUBRICATE AT ASSEMBLY
WITH BP ENERGREASE ACS-2 OR EQUIVALENT
—REMOVE SET SCREW AND USE GREASE NIPPLE
SANDVIK #5962-012-01 WHEN LUBRICATING
REPLACE SET SCREW (2X)



CLEAN WITH LOCTITE 7970
APPLY LOCTITE 282 PER
MANUFACTURER SPECIFICATION
(FIRST 3 THREADS MIN.)
TORQUE TO 39 Nm (2X)



SECTION B-B
SCALE 1 : 1



VIEW A-A
SCALE 1 : 1

REVISION RECORD

| LET | RELEASED | DESCRIPTION | BY | DATE |
|-----|-----------|-------------|-----|-------|
| A | | | MH | 11/04 |
| B | ECR #7965 | | BAM | 3/05 |
| C | ECR #8046 | | BAM | 5/05 |
| D | ECR #8141 | | BAM | 7/05 |
| E | ECR #8161 | | MW | 3/05 |
| F | ECR #8279 | | ON | 6/06 |

| Parts List | | | |
|------------|-----|---------------|---------------------------------------|
| ITEM | QTY | PART NUMBER | DESCRIPTION |
| 1.1 | 1 | 202-788-4470 | O-RING 44.5 x 3 |
| 1.2 | 2 | SHCSM8X25 | CAP SCREW, M8 x 25 |
| 1.3 | 1 | 202-731-4470 | O-RING 54.5 x 3 |
| 1.4 | 2 | 014-112 | M8 LOCK WASHER |
| 2 | 2 | C4-CU-CS-11 | CAPTO C4 CLAMPING UNIT, STATIC |
| 3 | 1 | T00184-C4L-1 | BODY, DOUBLE OD CUT HOLDER - CAPTO C4 |
| 4 | 4 | FCWA-0111-019 | M12 THREAD CAP |
| 5 | 4 | SHCSM12X90 | CAP SCREW, M12 x 90 |
| 6 | 1 | 204-009-4470 | O-RING, 9 x 2 |
| 7 | 8 | MB 600-050 | KOENIG EXPANDER SEALING PLUG |
| 8 | 3 | SSPLG0125BSPT | 1/8" BSPT PIPE PLUG |
| 9 | 1 | LB-SANDVIK | SANDVIK LABEL |
| 10 | 2 | SSDPM8X16 | SET SCREW, DOG POINT, M8 x 16 |

| | | | |
|--|---|---|--------------------------------|
| | | PART NAME: CAPTO C4 O.D. TURNING DOUBLE LH 2000 LH MATERIAL: SEE BOM FINISH: N/A DRAWN BY: mathoy CHECKED BY: | SCALE: NONE DATE: 11/3/2004 |
| | SANDVIK WORLD HEADQUARTERS 130 PERSHOTT PARKWAY FAIRPORT, NEW YORK 14450 | PART NUMBER: C4-LCE-NL2000-061089ADT | REV: F |