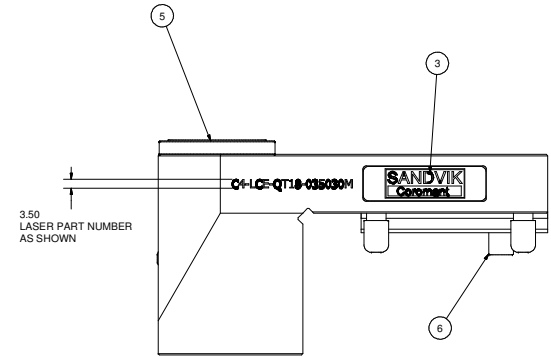
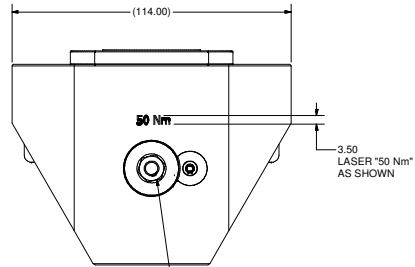
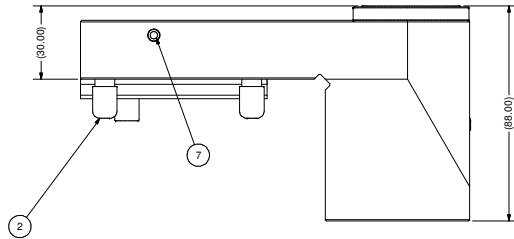
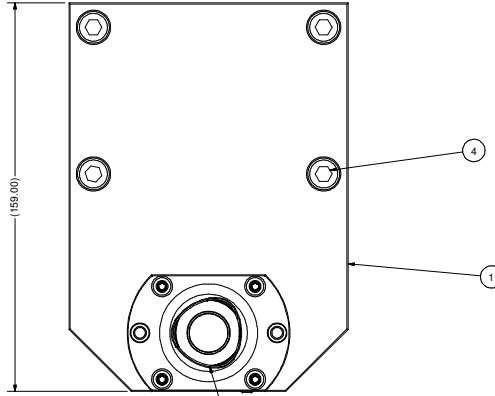
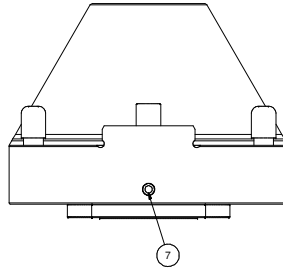
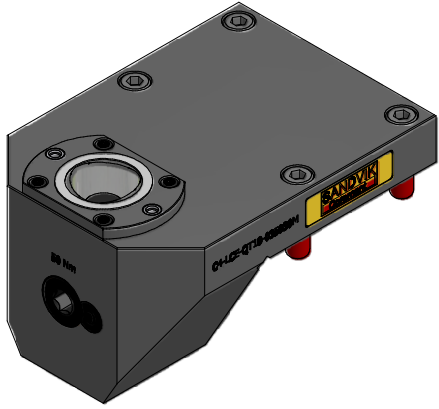


THIS DRAWING IS THE PROPERTY OF PARTEC INC. AND IS SUBJECT TO BEING RETURNED UPON REQUEST. IT SHALL NOT BE REPRODUCED IN WHOLE OR PART WITHOUT WRITTEN PERMISSION OF PARTEC INC. ANY VIOLATION IS PROHIBITED UNDER THE ENFORCEABLE TERMS OF THE LICENSE AGREEMENT.



Parts List			
ITEM	QTY	PART NUMBER	DESCRIPTION
1	1	C4-RCE-QT18-035030M-1	BODY, TURNING TOOL HOLDER, CAPTO C4
2	4	FCWA-0079-013	MB THREAD CAP
3	1	LB-SANDVIK	SANDVIK LABEL
4	4	SHCSMBX30	CAP SCREW, MB x 30
5	1	C4-CL-CS-11	CAPTO C4 CLAMPING UNIT, STATIC
6	1	DWLM10X24	DOWEL PIN, M10 X 24LG
7	2	MB 600-050	KOENIG EXPANDER SEALING PLUG

NOTES:

1. USE KOENIG SETTING TOOL MB-050 FOR INSTALLING PLUGS, ITEM 7.
2. APPROXIMATE WEIGHT: 11 Lbs.

NOTE CORRECT ORIENTATION OF CAPTO SLEEVE

-LUBRICATE AT ASSEMBLY WITH BP ENERGREASE ACS-2 OR EQUIVALENT REMOVE SET SCREW AND USE GREASE NIPPLE SANDVIK #5692-012-01 WHEN LUBRICATING REPLACE SET SCREW

		PART NAME: TURNING TOOL HOLDER, CAPTO C4, LH	
WORLD HEADQUARTERS 210 FORTSON PARKWAY FAIRPORT, NEW YORK 14450		MATERIAL: SEE BOM	
FINISH: FRESH		SCALE: NONE	
DESIGNED BY: B.MARTINA		DATE: 2/1/2006	
PART NUMBER: C4-LCE-QT18-035030M		REV: 1	