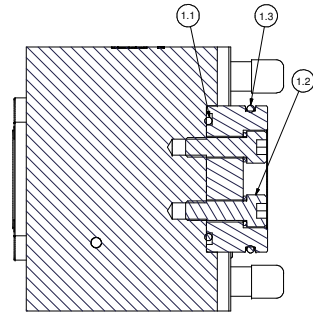
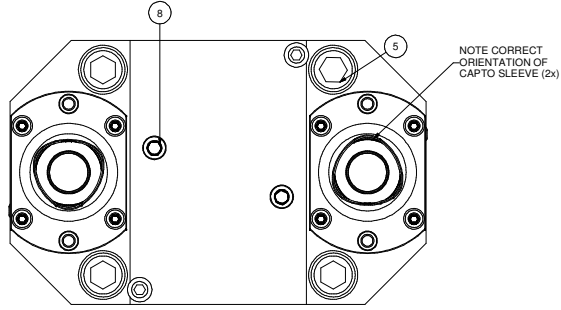


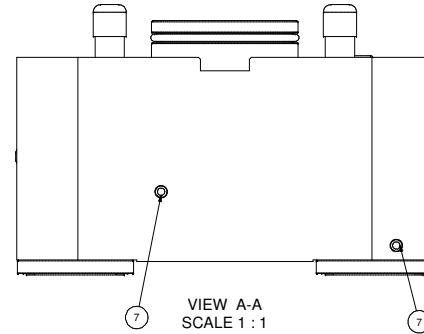
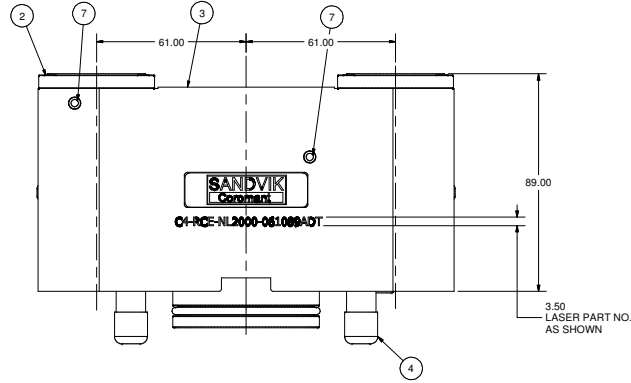
THIS DRAWING IS THE PROPERTY OF PARLEG INC. AND IS SUBJECT TO BEING RETURNED UPON REQUEST. IT SHALL NOT BE REPRODUCED IN WHOLE OR PART WITHOUT WRITTEN PERMISSION OF PARLEG INC. ANY VIOLATION IS PROHIBITED UNDER PENALTY OF LAW.



NOTES:  
1. USE KOENIG SETTING TOOL MB-050 FOR INSTALLING PLUGS, ITEM 8.

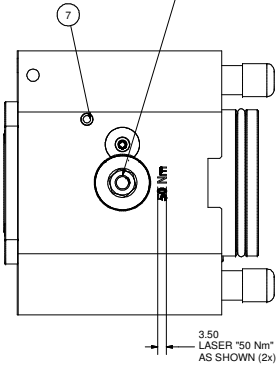


SECTION B-B  
SCALE 1 : 1

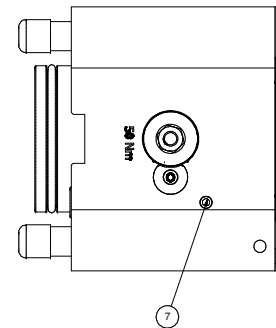
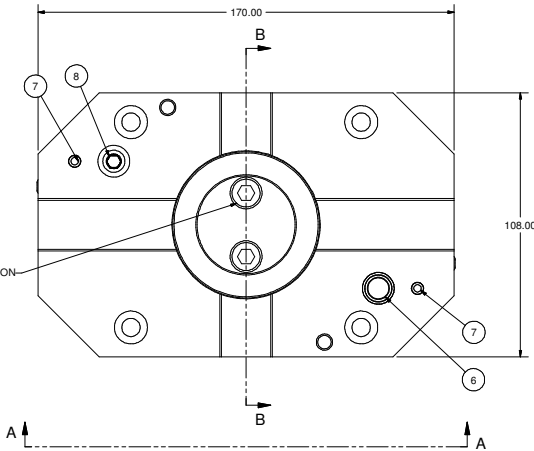


VIEW A-A  
SCALE 1 : 1

LUBRICATE AT ASSEMBLY WITH BP ENERGREASE ACS-2 OR EQUIVALENT - REMOVE SET SCREW AND USE GREASE NIPPLE SANDVIK #5962-012-01 WHEN LUBRICATING REPLACE SET SCREW (2x)



CLEAN WITH LOCTITE 7070 APPLY LOCTITE 262 PER MANUFACTURER SPECIFICATION (FIRST 3 THREADS MIN.) TORQUE TO 39 Nm (2x)



Parts List			
ITEM	QTY	PART NUMBER	DESCRIPTION
1.1	1	202-788-4470	O-RING 44.5 x 3
1.2	2	SHCSM8X25	CAP SCREW, M8 x 25
1.3	1	202-731-4470	O-RING 54.5 x 3
1.4	2	014-112	M8 LOCK WASHER
2	2	C4-CU-CS-11	CAPTO C4 CLAMPING UNIT, STATIC
3	1	T00184-C4L-1	BODY, DOUBLE OD CUT HOLDER - CAPTO C4
4	4	FCWA-0111-019	M12 THREAD CAP
5	4	SHCSM12X90	CAP SCREW, M12 x 90
6	1	204-009-4470	O-RING, 9 x 2
7	8	MB 600-050	KOENIG EXPANDER SEALING PLUG
8	3	SSPLG0125BSPT	1/8" BSPT PIPE PLUG
9	1	LB-SANDVIK	SANDVIK LABEL
10	2	SSDPM8X16	SET SCREW, DOG POINT, M8 x 16

	PART NAME CAPTO C4 O.D. TURNING DOUBLE, NL 2000, RH
	MATERIAL SEE BOM
	FINISH N/A
	DATE 11/3/2004
WORLD HEADQUARTERS 200 PERSHING PARKWAY FAIRPORT, NEW YORK 14450	DRAWN BY mathoy
PART NUMBER C4-RCE-NL2000-061089ADT	REV F