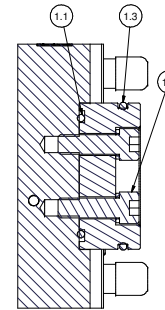
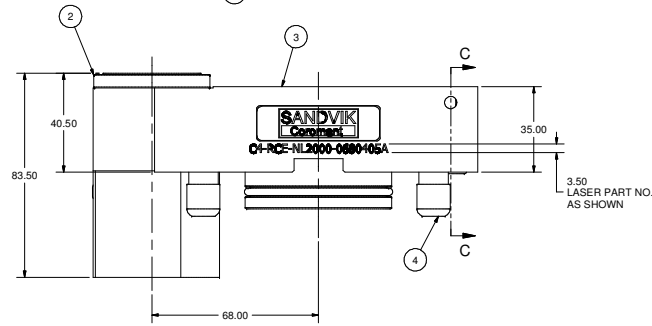
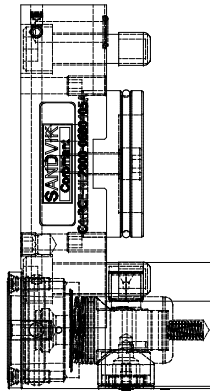
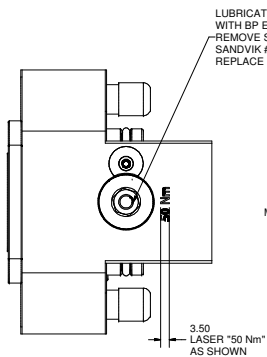


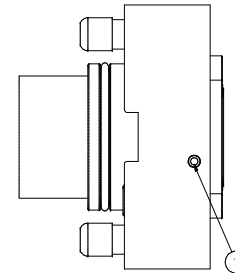
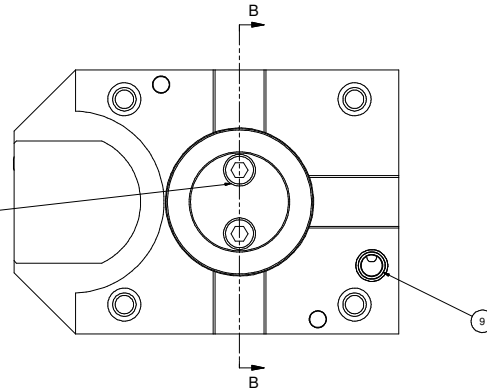
SECTION C-C
SCALE 1 : 1



SECTION B-B
SCALE 1 : 1



CLEAN WITH LOCTITE 7070
APPLY LOCTITE 262 PER
MANUFACTURER SPECIFICATION
(FIRST 3 THREADS MIN.)
TORQUE TO 39 Nm (2X)



REVISION RECORD		
LET	DESCRIPTION	BY DATE
A	RELEASED	MH 11/04
B	ECR #7965	BAM 3/05
C	ECR #8046	BAM 5/05
D	ECR #8141	BAM 7/05
E	ECR #8161	MW 8/05
F	ECR #8279	ON 8/06

Parts List			
ITEM	QTY	PART NUMBER	DESCRIPTION
1.1	1	202-789-4470	O-RING 44.5 x 3
1.2	2	SHCSM8X25	CAP SCREW, M8 x 25
1.3	1	202-731-4470	O-RING 54.5 x 3
1.4	2	014-112	M8 LOCK WASHER
2	1	C4-CU-CS-11	CAPTO C4 CLAMPING UNIT, STATIC
3	1	T00187-C4R-1	BODY, OD CUTTING HOLDER - CAPTO C4 R
4	4	FCWA-0111-019	M12 THREAD CAP
5	4	SHCSM12X40	CAP SCREW, M12 x 40
6	1	SSPLG0125BSPT	1/8" BSPT PIPE PLUG
7	2	MB 600-050	KOENIG EXPANDER SEALING PLUG
8	1	LB-SANDVIK	SANDVIK LABEL
9	1	204-009-4470	O-RING, 9 x 2
10	2	SSM8X16	SET SCREW, FLAT POINT, M8 x 16

		PART NAME CAPTO C4 O.D. TURNING MAX. NL 2000 FH MATERIAL SEE BOM SCALE NONE DATE 11/20/04
	WORLD HEADQUARTERS 130 FORTIN PARKWAY FARMPORT, NEW YORK 14450	DESIGNED BY mtholy CHECKED BY
PART NUMBER C4-RCE-NL2000-0680405A	REV F	

NOTES:

1. USE KOENIG SETTING TOOL MB-050 FRO INSTALLING PLUGS, ITEM 10.