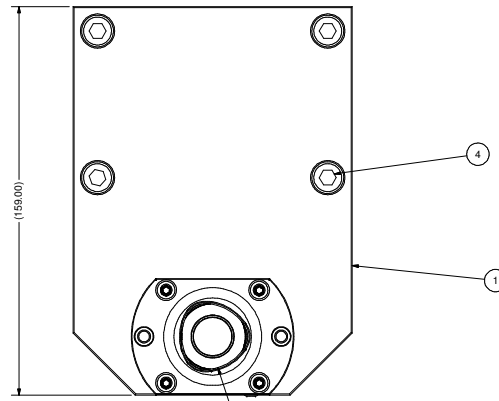
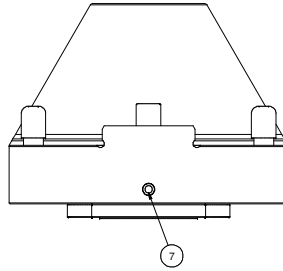
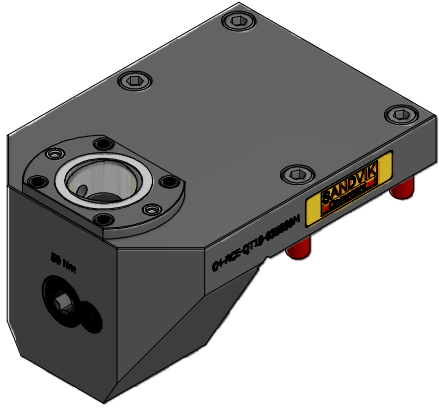
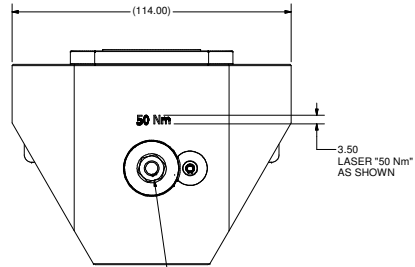
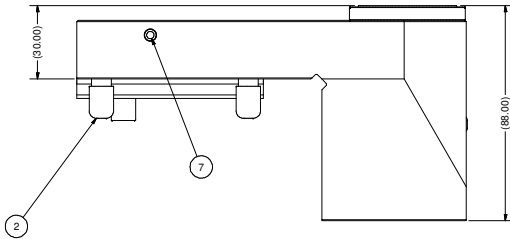


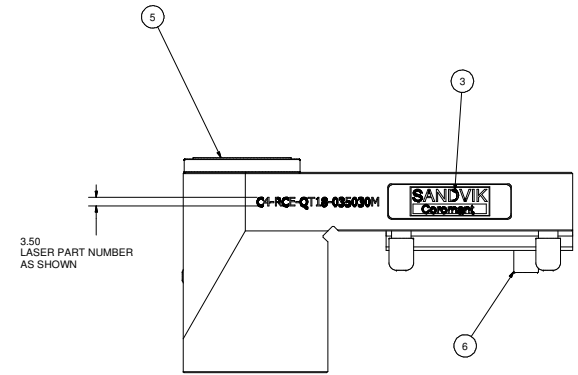
ITEMS SHOWN IN THIS DOCUMENT CONTAIN PROPRIETARY INFORMATION OF PARTEC INC. AND IS SUBJECT TO BEING RETURNED UPON REQUEST. IT SHALL NOT BE REPRODUCED IN WHOLE OR PART WITHOUT WRITTEN PERMISSION OF PARTEC INC. ANY VIOLATION IS PROHIBITED UNDER THE EYE OF THE LAW.



NOTE CORRECT ORIENTATION OF CAPTO SLEEVE



LUBRICATE AT ASSEMBLY WITH BP ENERGREASE ACS-2 OR EQUIVALENT REMOVE SET SCREW AND USE GREASE NIPPLE SANDVIK #5692-012-01 WHEN LUBRICATING REPLACE SET SCREW



Parts List			
ITEM	QTY	PART NUMBER	DESCRIPTION
1	1	C4-RCE-QT18-035030M-1	BODY, TURNING TOOL HOLDER, CAPTO C4
2	4	FCWA-0079-013	M8 THREAD CAP
3	1	LB-SANDVIK	SANDVIK LABEL
4	4	SHCSM8X30	CAP SCREW, M8 x 30
5	1	C4-CU-CS-11	CAPTO C4 CLAMPING UNIT, STATIC
6	1	DWLM10X24	DOWEL PIN, M10 X 24LG
7	2	MB 600-050	KOENIG EXPANDER SEALING PLUG

NOTES:

1. USE KOENIG SETTING TOOL MB-050 FOR INSTALLING PLUGS, ITEM 7.
2. APPROXIMATE WEIGHT: 11 lbs.

		PARTEC		PART NAME: TURNING TOOL HOLDER, CAPTO C4, RH	
BREAK ALL UNNECESSARY DIMENSIONS (INCHES)		MATERIAL: SEE BOM		SCALE: NONE	
WORLD HEADQUARTERS 200 PENTON PARKWAY FAIRPORT, NEW YORK 14450		FINISH: N/A		DATE: 2/1/2006	
DRAWN BY: B.MARTINA		CHECKED BY:		DESIGNED BY:	
PART NUMBER: C4-RCE-QT18-035030M		REV: 1		1	