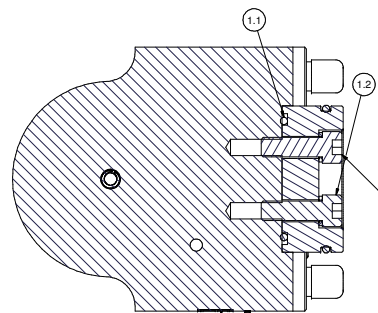
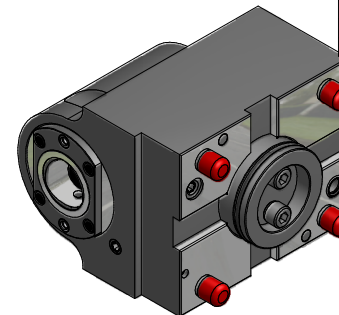
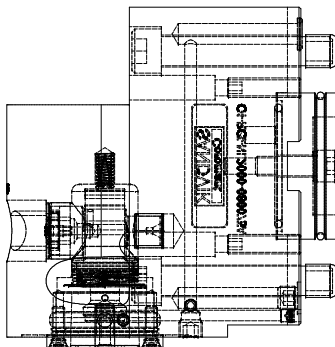


THIS DRAWING IS THE PROPERTY OF PARLEG INC. AND IS SUBJECT TO BEING RETURNED UPON REQUEST. IT SHALL NOT BE REPRODUCED IN WHOLE OR PART WITHOUT WRITTEN PERMISSION OF PARLEG INC. ANY VIOLATION IS PROHIBITED UNDER THE ENFORCEABLE TERMS OF THE LICENSE AGREEMENT.



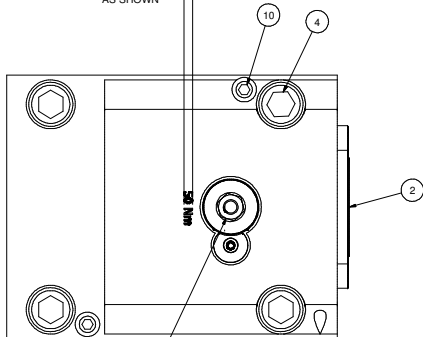
SECTION B-B
SCALE 1 : 1

CLEAN WITH LOCTITE 7070
APPLY LOCTITE 252 PER
MANUFACTURER SPECIFICATION
(FIRST 3 THREADS MIN.)
TORQUE TO 39 Nm (2X)

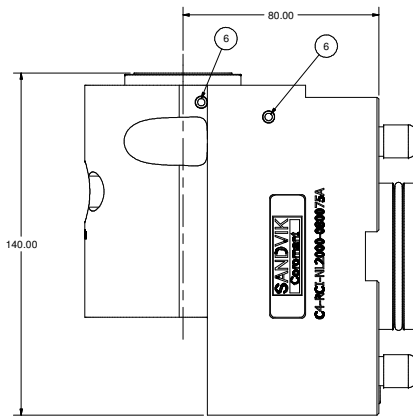
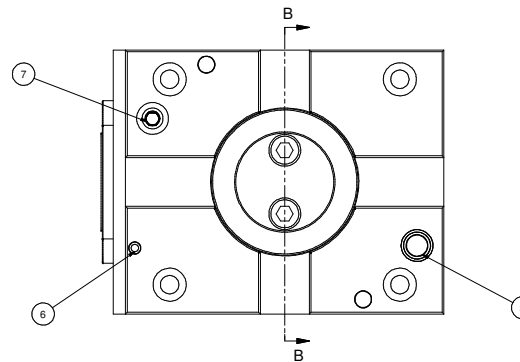
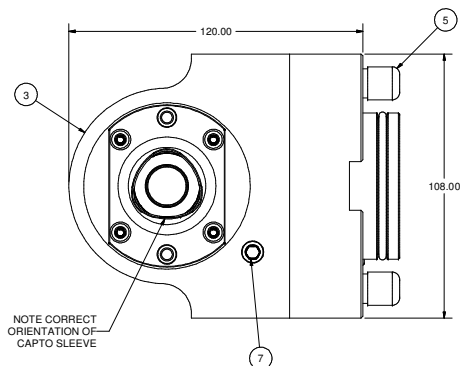


REVISION RECORD		
REV	DESCRIPTION	BY DATE
A	RELEASED	MH 11/04
B	ECR #7965	BAM 3/05
C	ECR #8046	BAM 5/05
D	ECR #8141	BAM 7/05
E	ECR #8279	ON 5/06

3.50
LASER "50 Nm"
AS SHOWN



LUBRICATE AT ASSEMBLY
WITH BP ENERGREASE ACS-2 OR EQUIVALENT
REMOVE SET SCREW AND USE GREASE NIPPLE
SANDVIK #5692-012-01 WHEN LUBRICATING
REPLACE SET SCREW



Parts List			
ITEM	QTY	PART NUMBER	DESCRIPTION
1.1	1	202-788-4470	O-RING 44.5 x 3
1.2	2	SHCSMBX25	CAP SCREW, M8 x 25
1.3	1	202-731-4470	O-RING 54.5 x 3
1.4	2	014-112	M8 LOCK WASHER
2	1	C4-CU-CS-11	CAPTO C4 CLAMPING UNIT, STATIC
3	1	T10097-C4-1	BODY, BORING BAR HOLDER - CAPTO C4
4	4	SHCSM12X70	CAP SCREW, M12 x 70
5	4	FCWA-0111-019	M12 THREAD CAP
6	3	MB 600-050	KOENIG EXPANDER SEALING PLUG
7	2	SSPLG0125BSPT	1/8" BSPT PIPE PLUG
8	1	LB-SANDVIK	SANDVIK LABEL
9	1	204-009-4470	O-RING, 9 x 2
10	2	SSMBX30	SET SCREW, FLAT POINT, M8 x 30

	PARLEG	PART NAME: CAPTO C4 LD. HOLDER, NL 2000, RM	SCALE: NONE
WORLD HEADQUARTERS 200 PERSHING PARKWAY FAIRPORT, NEW YORK 14453	FRSH: N/A	DATE: 11/3/2004	
DESIGNED BY: mathy	CHECKED BY: []		
PART NUMBER: C4-RCI-NL2000-080075A			

NOTES:

1. USE KOENIG SETTING TOOL MB-050 FOR INSTALLING PLUGS, ITEM 8.