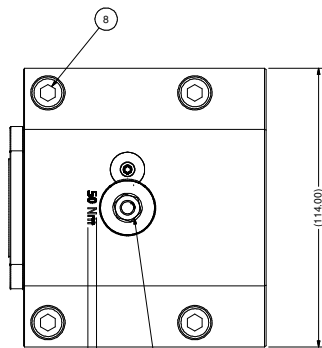


THIS DRAWING IS THE SOLE PROPERTY OF PARLEG INC. AND IS SUBJECT TO BEING RETURNED UPON REQUEST. IT SHALL NOT BE REPRODUCED IN WHOLE OR IN PART WITHOUT THE WRITTEN PERMISSION OF PARLEG INC. ANY VIOLATION IS PROHIBITED UNDER THE ENFORCEABLE



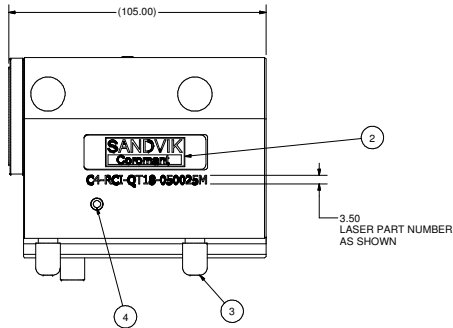
3.50
LASER "50 Nm"
AS SHOWN

LUBRICATE AT ASSEMBLY
WITH BP ENERGOLUBE ACS-2 OR EQUIVALENT
REMOVE SET SCREW AND USE GREASE NIPPLE
SANDVIK #5692-012-01 WHEN LUBRICATING
REPLACE SET SCREW

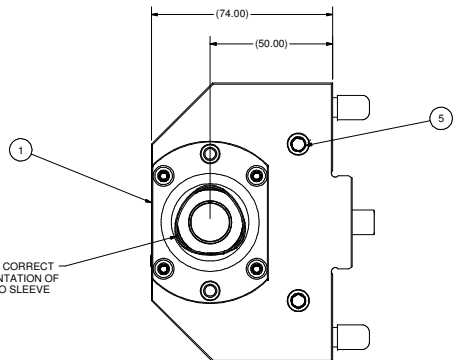
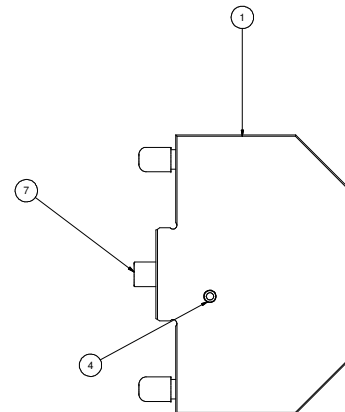
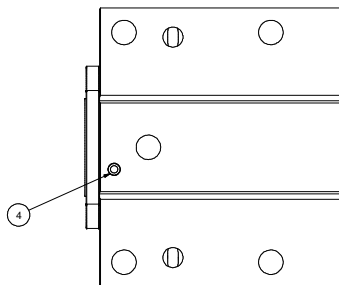
Parts List			
ITEM	QTY	PART NUMBER	DESCRIPTION
1	1	C4-RCI-QT18-050025M-1	BODY, BORING BAR HOLDER - CAPTO C4 R/L
2	1	LB-SANDVIK	SANDVIK LABEL
3	4	FCWA-0079-013	M8 THREAD CAP
4	3	MB 600-050	KOENIG EXPANDER SEALING PLUG
5	2	SSPLG0125BSPT	1/8" BSPT PIPE PLUG
6	1	C4-CU-CS-11	CAPTO C4 CLAMPING UNIT, STATIC
7	1	DWLM10X24	DOWEL PIN, M10 X 24LG
8	4	SHCSM8X55	CAP SCREW, M8 x 40

NOTES:

1. USE KOENIG SETTING TOOL MB-050 FOR INSTALLING PLUGS, ITEM 4.
2. APPROXIMATE WEIGHT: 11.2 Lbs.



3.50
LASER PART NUMBER
AS SHOWN



NOTE CORRECT
ORIENTATION OF
CAPTO SLEEVE

		CAPTO C4 BORING BAR HOLDER, RH	
BREAK ALL UNNECESSARY DIMENSIONS (DIMENSIONS IN PARENTHESES) DIMENSIONS XXX.X .005 XXXX.X .002 XXXXX .001	METRIC DIMENSIONS XXX.X .01 XXXX.X .005 XXXXX .002	PART NUMBER C4-RCI-QT18-050025M	SCALE: NONE DATE: 1/19/2006 DRAWN BY: B.MARTINA CHECKED BY: