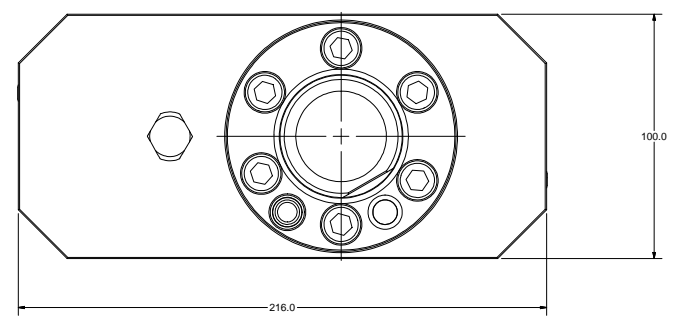
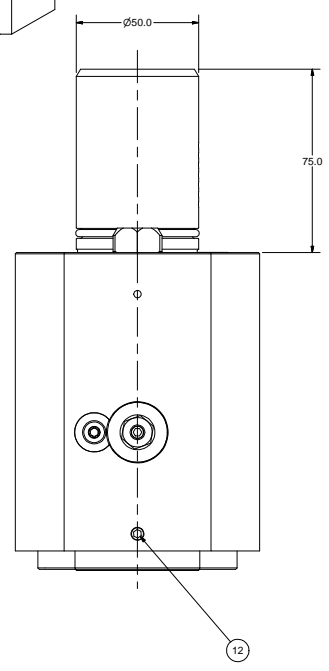
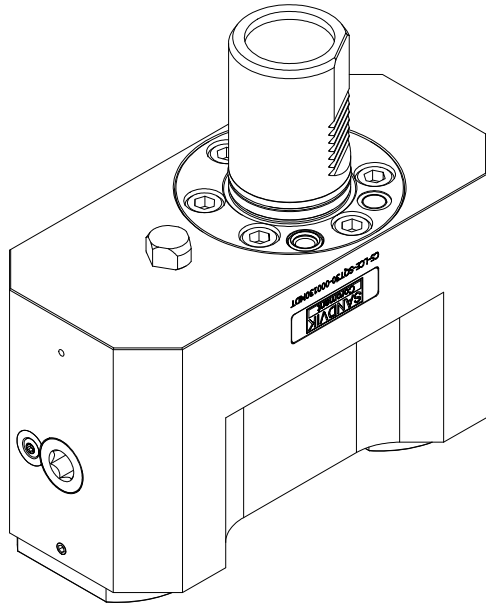
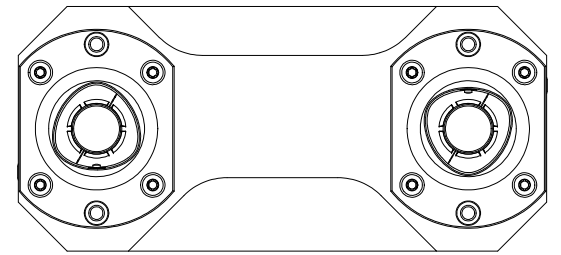
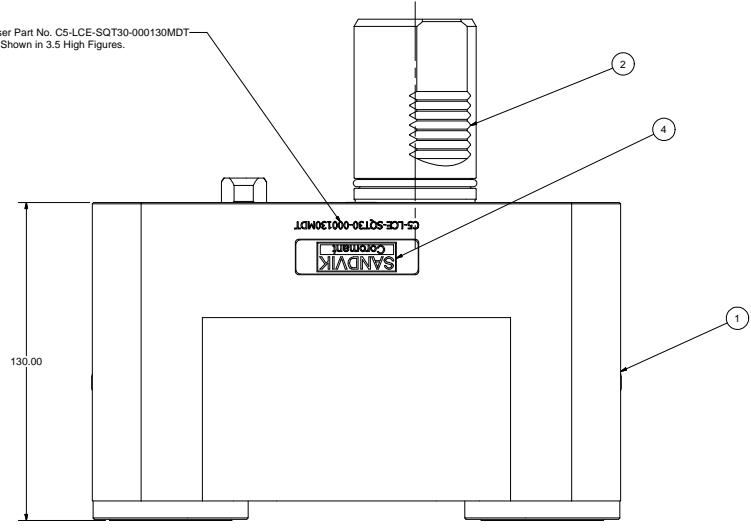


THIS DRAWING IS THE PROPERTY OF PARLEG INC. AND IS SUBJECT TO BEING RETURNED UPON REQUEST. IT SHALL NOT BE REPRODUCED IN WHOLE OR PART WITHOUT WRITTEN PERMISSION OF PARLEG INC. ANY UNAUTHORIZED REPRODUCTION MUST BEAR THE FOLLOWING LEGAL NOTICE.



Laser Part No. C5-LCE-SQT30-000130MDT
As Shown in 3.5 High Figures.



Parts List			
ITEM	QTY	PART NUMBER	DESCRIPTION
1	1	C5-RCE-SQT30-000130MDT-1	C5 Double Ext. Reverse Tool Holder
2	1	226-14129-002	SQT28 Static Shank
4	1	LB-SANDVIK	SANDVIK LABEL
5	6	SHCSM10X25	CAP SCREW, M10 x 25
12	1	SSM6X6	SET SCREW, M6 x 6
13	2	C5-CU-CS-11	CAPTO C5 CLAMPING UNIT, STATIC
14	1	196-13636-004	LOCATION PIN
15	1	DWLM10X30	DOWEL PIN
16	1	204-010-4470	O-RING 10 x 2
17	1	202-788-4470	O-RING 44.5 x 3

		PART NAME: C5 Double Ext. L/H Forward/Reverse Tool Holder	
SPECIAL INSTRUCTIONS: SHIP CONDS: ANGLE: 45° (30°/60°)	DATE: 11/1/2006	DRAWN BY: marco	CHECKED BY:
PART NUMBER: C5-LCE-SQT30-000130MDT		PR 1	