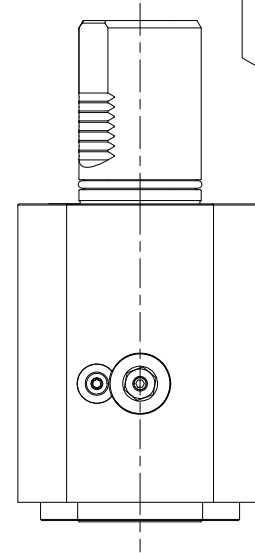
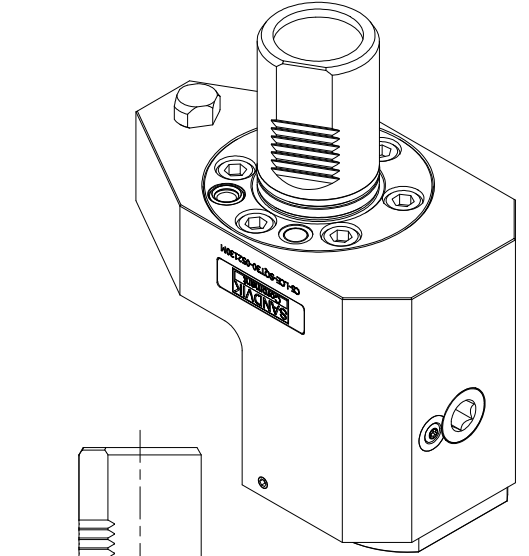
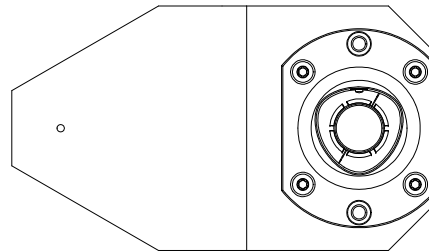
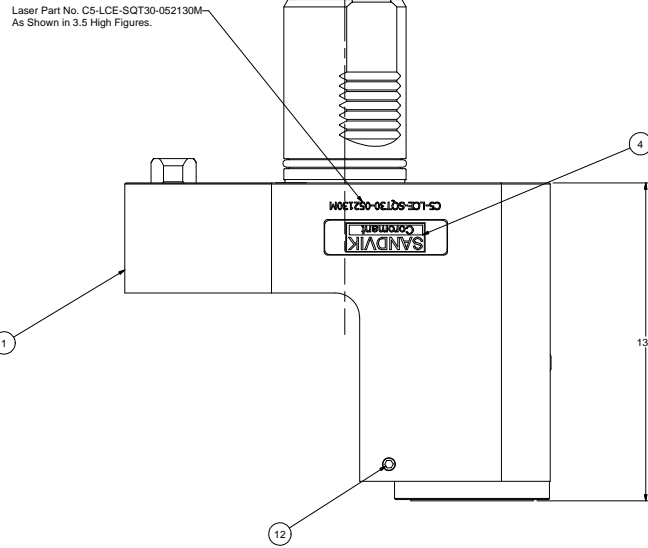
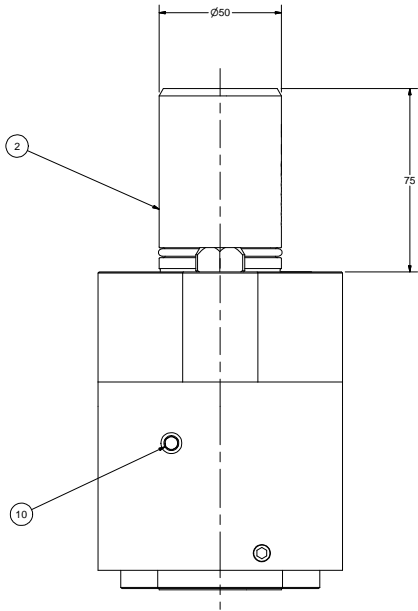
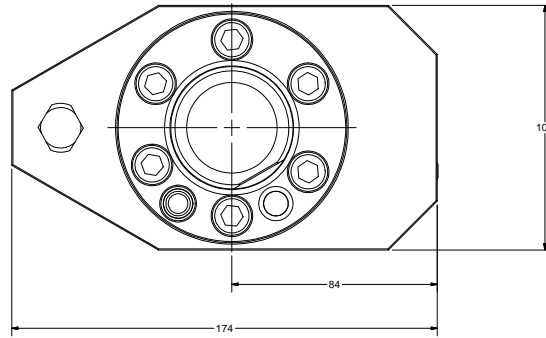


Parts List			
ITEM	QTY	PART NUMBER	DESCRIPTION
1	1	C5-RCE-SQT30-052130 M-1	C5 Ext. Forward Tool Holder
2	1	226-14129-002	SQT28 Static Shank
4	1	LB-SANDVIK	SANDVIK LABEL
5	6	SHCSM10X25	CAP SCREW, M10 x 25
10	1	SSPLG0125BSPT	1/8" BSPT PIPE PLUG
11	1	SSM8X6	SET SCREW, M8 x 8
12	2	SSM6X6	SET SCREW, M6 x 6
13	1	C5-CU-CS-11	CAPTO C5 CLAMPING UNIT, STATIC
14	1	196-13636-004	LOCATION PIN
15	1	D1WLM10X30	DOWEL PIN
16	1	204-010-4470	O-RING 10 x 2
17	1	202-788-4470	O-RING 44.5 x 3

THIS DRAWING IS THE EXCLUSIVE PROPERTY OF PARLEG, INC. AND IS SUBJECT TO BEING RETURNED UPON REQUEST. IT SHALL NOT BE REPRODUCED IN WHOLE OR PART WITHOUT WRITTEN PERMISSION OF PARLEG, INC. ANY UNAUTHORIZED REPRODUCTION MUST BEAR THE EXPRESS LEGAL NOTICE.



		C5 External LH Forward Tool Holder	
SPECIAL APPLICATIONS WORLD HEADQUARTERS 100 PERSIMMON PARKWAY RAIFORT, NEW YORK 14480	DATE: 11/1/2006 SCALE: NONE DRAWN BY: [initials] CHECKED BY: [initials]	PART NUMBER C5-LCE-SQT30-052130	REV: 1 DATE: 11/1/2006 BY: [initials] CHECKED BY: [initials]