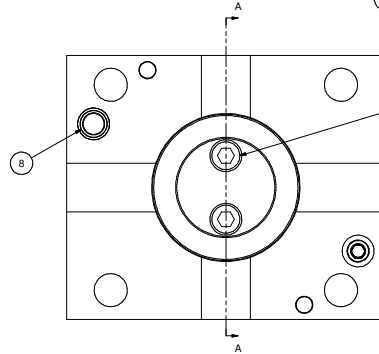
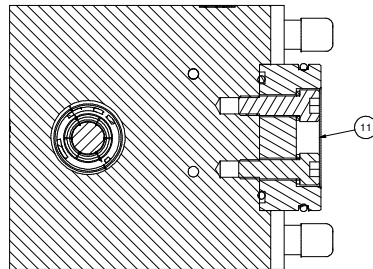
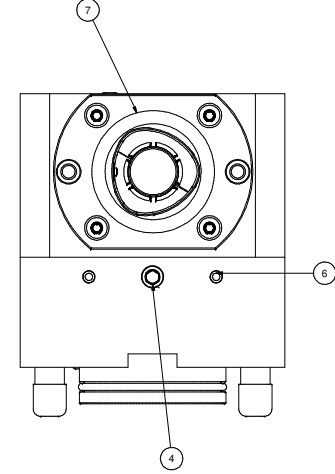
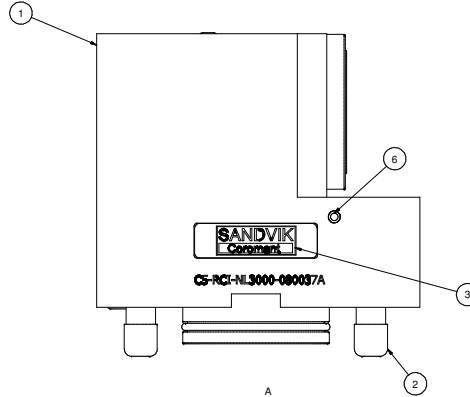
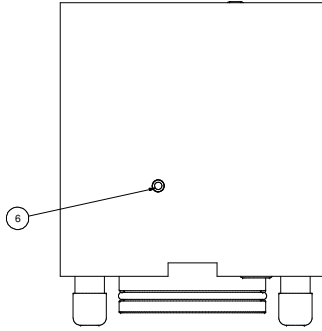
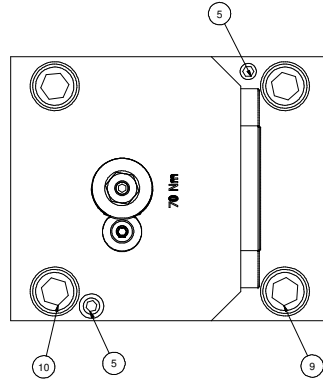
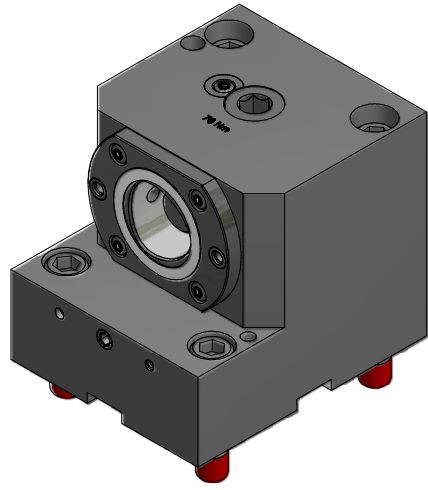


THIS DRAWING IS THE SOLE PROPERTY OF PARLEG INC. AND IS SUBJECT TO BEING RETURNED UPON REQUEST. IT SHALL NOT BE REPRODUCED IN WHOLE OR PART WITHOUT THE WRITTEN PERMISSION OF PARLEG INC. ANY VIOLATION IS PROHIBITED UNDER THE PENALTY OF LAW.



CLEAN WITH LOCTITE 7070
APPLY LOCTITE 262 PER
MANUFACTURER SPECIFICATION
(FIRST 3 THREADS MIN.)
TORQUE TO 39 Nm (2X)

Parts List			
ITEM	QTY	PART NUMBER	DESCRIPTION
1	1	C5-080037A-1	BODY, BORING BAR HOLDER - CAPTO C5
2	4	FCWA-0111-019	M12 THREAD CAP
3	1	LB-SANDVIK	SANDVIK LABEL
4	2	SSPLG0125BSPT	1/8" BSPT PIPE PLUG
5	2	SSM8X30	SET SCREW, FLAT POINT, M8 x 30
6	5	MB 600-050	KOENIG EXPANDER SEALING PLUG
7	1	C5-CU-CS-11	CAPTO C5 CLAMPING UNIT, STATIC
8	1	204-009-4470	O-RING, 9 x 2
9	2	SHCSM12X50	CAP SCREW, M12 x 50
10	2	SHCSM12X110	CAP SCREW, M12 x 100
11	1	F73149	TOOL HOLDER PLUG ASSEMBLY
11.1	1	202-731-4470	O-RING 54.5 x 3
11.2	1	202-789-4470	O-RING 44.5 x 3
11.3	2	SHCSM8X25	CAP SCREW, M8 x 25
11.4	2	014-112	M8 LOCK WASHER

SECTION A-A
SCALE 1:1

		PARLEG		PART NUMBER C5-LCI-NL3000-080037A		SCALE NONE	
WORLD HEADQUARTERS 210 FORTSON PARKWAY FAIRPORT, NEW YORK 14450		MATERIAL 303 STAINLESS STEEL		FINISH POLISHED		DATE 8/20/2006	
DRG. NO. 080037A REV. 001 0000 X 0000 0000 X 0000		METRIC DIMENSIONS A X B X X L X X X X X X X X X X X		DRAWN BY GJ/BAU		CHECKED BY []	
PART NUMBER C5-LCI-NL3000-080037A		REV. A					