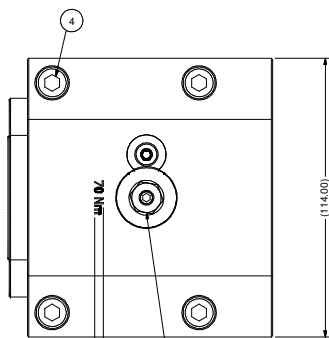
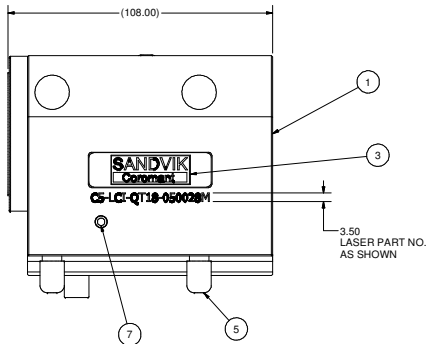


ITEMS SHOWN IN THIS DOCUMENT CONTAIN PROPRIETARY INFORMATION OF PARLEG, INC. AND IS SUBJECT TO BEING RETURNED FOR REQUEST. IT SHALL NOT BE REPRODUCED IN WHOLE OR PART WITHOUT WRITTEN PERMISSION OF PARLEG, INC. ANY VIOLATIONS WILL BE PROSECUTED TO THE FULLEST EXTENT OF THE LAW.

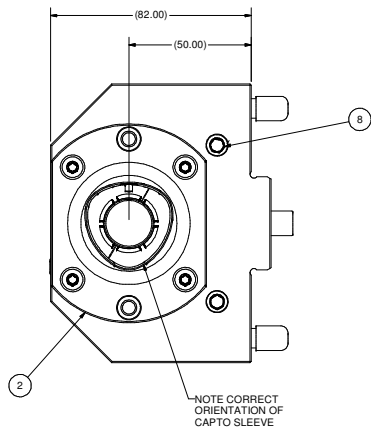


3.50  
LASER "70 Nm"  
AS SHOWN

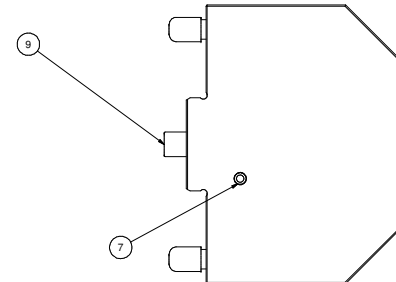
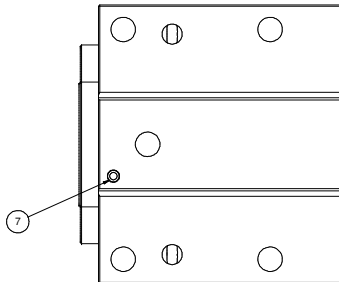
LUBRICATE AT ASSEMBLY  
WITH BP ENERGREASE ACS-2 OR EQUIVALENT  
REMOVE SET SCREW AND USE GREASE NIPPLE  
SANDVIK #5692-012-01 WHEN LUBRICATING  
REPLACE SET SCREW



3.50  
LASER PART NO.  
AS SHOWN



NOTE CORRECT  
ORIENTATION OF  
CAPTO SLEEVE



Parts List			
ITEM	QTY	PART NUMBER	DESCRIPTION
1	1	C5-LCI-QT18-050028M-1	BODY, BORING BAR HOLDER - CAPTO C5 R/L
2	1	C5-CU-CS-11	CAPTO C5 CLAMPING UNIT, STATIC
3	1	LB-SANDVIK	SANDVIK LABEL
4	4	SHCSM8X65	CAP SCREW, M8 x 40
5	4	FCWA-0079-013	M8 THREAD CAP
7	3	MB 600-050	KOENIG EXPANDER SEALING PLUG
8	2	SSPLG0125BSPT	1/8" BSPT PIPE PLUG
9	1	DWLM10X24	DOWEL PIN, M10 X 24LG

NOTES:

1. USE KOENIG SETTING TOOL MB-050 FOR INSTALLING PLUGS, ITEM 7.
2. APPROXIMATE WEIGHT: 14 Lbs.

		PART NAME: CAPTO C5 BORING BAR HOLDER, LH MATERIAL: SEE BOM REFINISH: N/A FINISH: N/A DRAWN BY: B.MARTINA CHECKED BY:	SCALE: NONE DATE: 1/19/2006
WORLD HEADQUARTERS 210 PERSHING PARKWAY FAIRPORT, NEW YORK 14450		PART NUMBER: C5-LCI-QT18-050028M REV: 1	