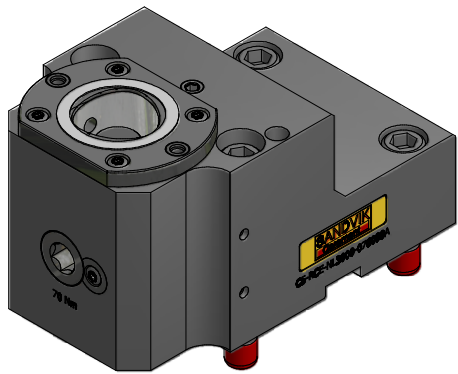
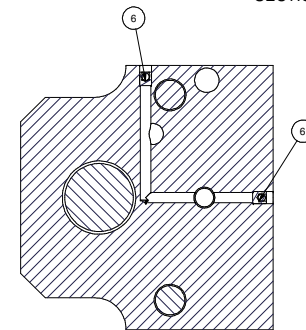
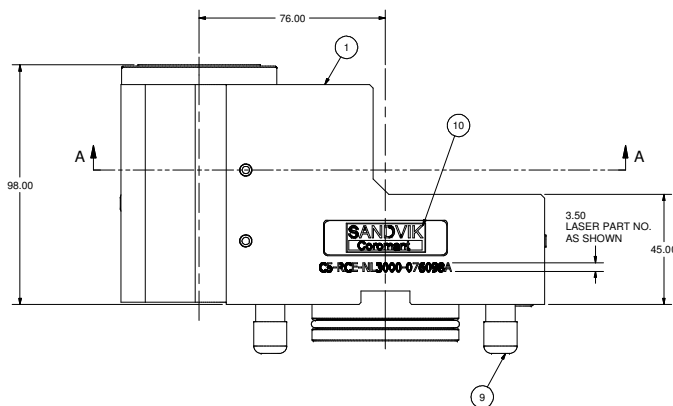
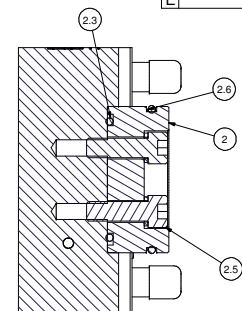
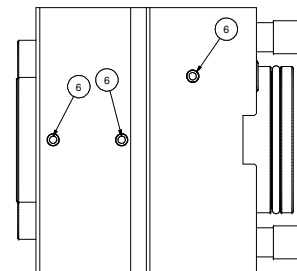
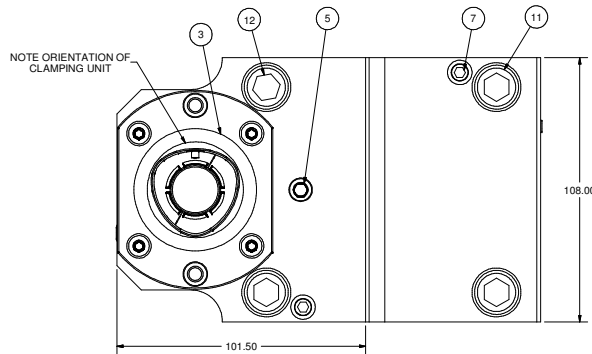


THIS DRAWING IS THE PROPERTY OF PARLEG INC. AND IS SUBJECT TO BEING RETURNED UPON REQUEST. IT SHALL NOT BE REPRODUCED IN WHOLE OR PART WITHOUT WRITTEN PERMISSION OF PARLEG INC. ANY VIOLATION IS PROHIBITED UNDER THE ENFORCEABLE LEGISLATION.

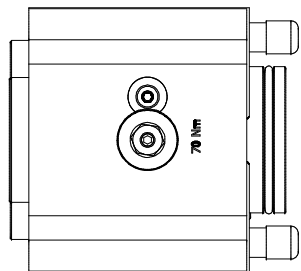
REVISION RECORD			
LET	DESCRIPTION	BY	DATE
A	RELEASED	TT	2025
B	ECR #8048	BAM	5/25
C	ECR #8141	BAM	7/25
D	ECR #8162	MW	8/25
E	ECR #8279	ON	5/26



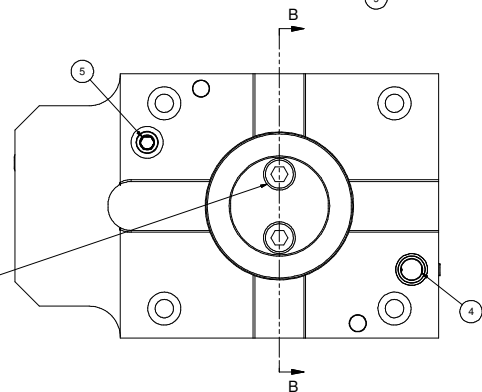
WEIGHT; 7.4kg



SECTION A-A



CLEAN WITH LOCTITE 7070
APPLY LOCTITE 262 PER
MANUFACTURER SPECIFICATION
(FIRST 3 THREADS MIN.)
TORQUE TO 39 Nm (2X)



Parts List			
ITEM	QTY	PART NUMBER	DESCRIPTION
1	1	C5-076098A-1	BODY, OD CUTTING HOLDER - CAPTO C5
2.3	1	202-788-4470	O-RING 44.5 x 3
2.5	2	SHCSM8X25	CAP SCREW, M8 x 25
2.6	1	202-731-4470	O-RING 54.5 x 3
2.7	2	D14-112	M8 LOCK WASHER
3	1	C5-CL-C5-11	CAPTO C5 CLAMPING UNIT, STATIC
4	1	204-009-4470	O-RING, 9 x 2
5	2	SSPLG0125BSPT	1/8" BSPT PIPE PLUG
6	5	MB 600-050	KOENIG EXPANDER SEALING PLUG
7	2	SSM8X30	SET SCREW, FLAT POINT, M8 x 30
9	4	FCWA-0111-019	M12 THREAD CAP
10	1	LB-SANDVIK	SANDVIK LABEL
11	2	SHCSM12X50	CAP SCREW, M12 x 50
12	2	SHCSM12X90	CAP SCREW, M12 x 90

	PARLEG WORLD HEADQUARTERS 200 PENNINGTON PARKWAY FAIRPORT, NEW YORK 11734	PART NAME: CAPTO C5 O.D. TURNING, RH MATERIAL: SEE BOM FINISH: N/A QUANTITY: 1	SCALE: NONE DATE: 11/20/2024
	PART NUMBER: C5-RCE-NL3000-076098A	DRAWN BY: T. TANDO CHECKED BY:	REV: E