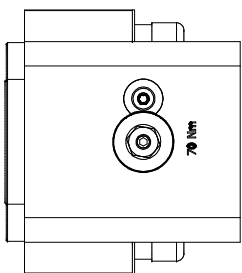
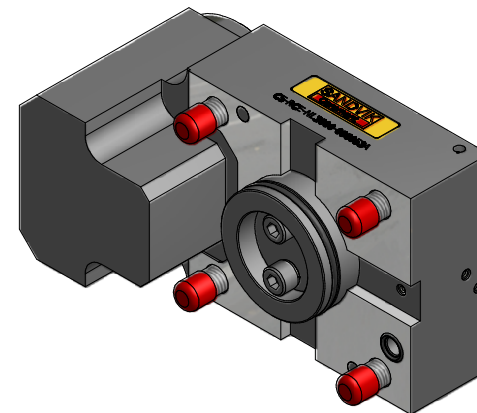
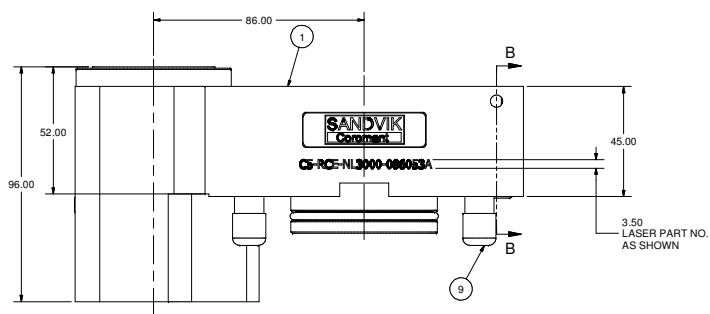
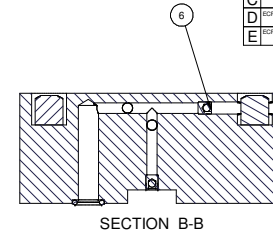
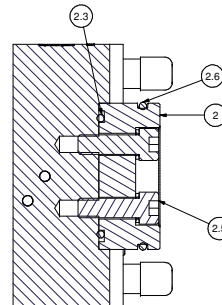
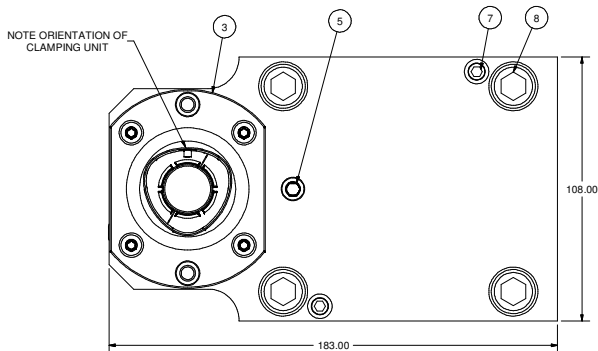
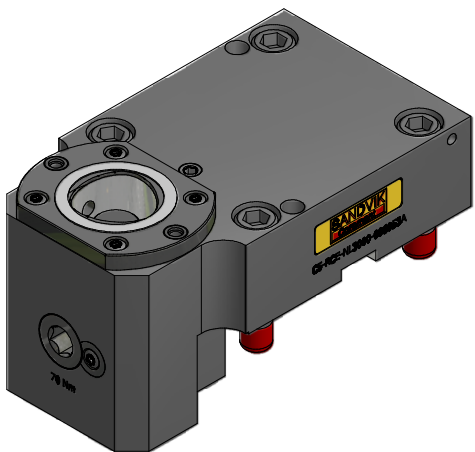
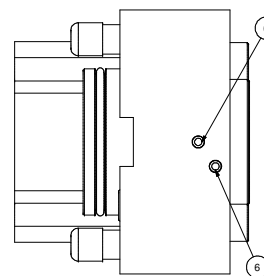
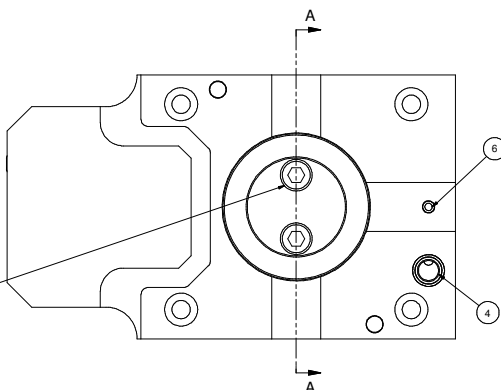


THIS DRAWING IS THE SOLE PROPERTY OF PARLEG INC. AND IS SUBJECT TO BEING RETURNED UPON REQUEST. IT SHALL NOT BE REPRODUCED IN WHOLE OR PART WITHOUT THE WRITTEN PERMISSION OF PARLEG INC. ANY VIOLATION IS PROHIBITED UNDER PENALTY OF THE FOLLOWING:

| REVISION RECORD | | |
|-----------------|-------------|----------|
| LET | DESCRIPTION | BY DATE |
| A | RELEASED | MH 11/04 |
| B | ECR #8048 | BAM 5/05 |
| C | ECR #8141 | BAM 7/05 |
| D | ECR #8161 | MW 8/05 |
| E | ECR #8278 | ON 8/06 |



CLEAN WITH LOCTITE 7070
APPLY LOCTITE 262 PER
MANUFACTURER SPECIFICATION
(FIRST 3 THREADS MIN.)
TORQUE TO 39 Nm (2X)



| Parts List | | | |
|------------|-----|---------------|--------------------------------|
| ITEM | QTY | PART NUMBER | DESCRIPTION |
| 1 | 1 | C5-086053A-1 | BODY, CAPTO C5, MAX O.D. |
| 2.3 | 1 | 202-788-4470 | O-RING 44.5 x 3 |
| 2.5 | 2 | SHCSM8X25 | CAP SCREW, M8 x 25 |
| 2.6 | 1 | 202-731-4470 | O-RING 54.5 x 3 |
| 2.7 | 2 | 014-112 | M8 LOCK WASHER |
| 3 | 1 | C5-CU-CS-11 | CAPTO C5 CLAMPING UNIT, STATIC |
| 4 | 1 | 204-009-4470 | O-RING, 9 x 2 |
| 5 | 1 | SSPLG0125BSPT | 1/8" BSPT PIPE PLUG |
| 6 | 4 | MB 600-050 | KOENIG EXPANDER SEALING PLUG |
| 7 | 2 | SSM8X30 | SET SCREW, FLAT POINT, M8 x 30 |
| 8 | 4 | SHCSM12X50 | CAP SCREW, M12 x 50 |
| 9 | 4 | FCWA-0111-019 | M12 THREAD CAP |
| 10 | 1 | LB-SANDVIK | SANDVIK LABEL |

| | | | |
|--|---|---|-------------------------------|
| | PARLEG WORLD HEADQUARTERS 200 PENNINGTON PARKWAY FAIRPORT, NEW YORK 14450 | PART NAME: CAPTO C5, MAX O.D. RH MATERIAL: SEE BOM FINISH: N/A DRAWN BY: T. TANGO CHECKED BY: | SCALE: NONE DATE: 11/20/04 |
| | PART NUMBER: C5-RCE-NL3000-086053A | REV: E | |