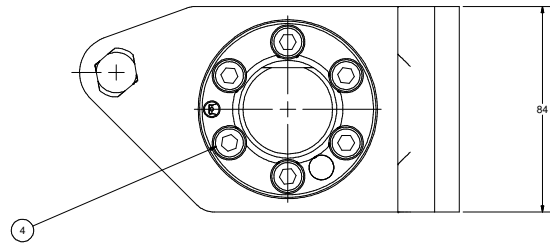
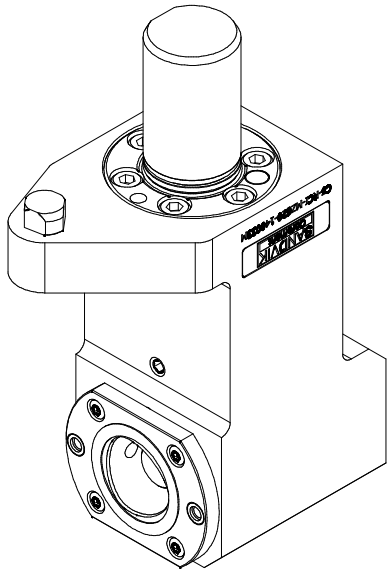
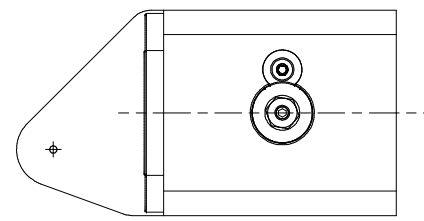
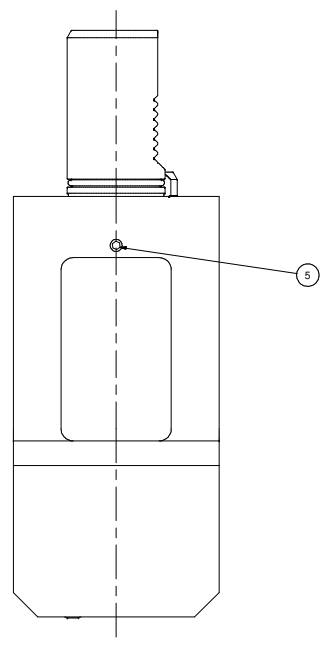
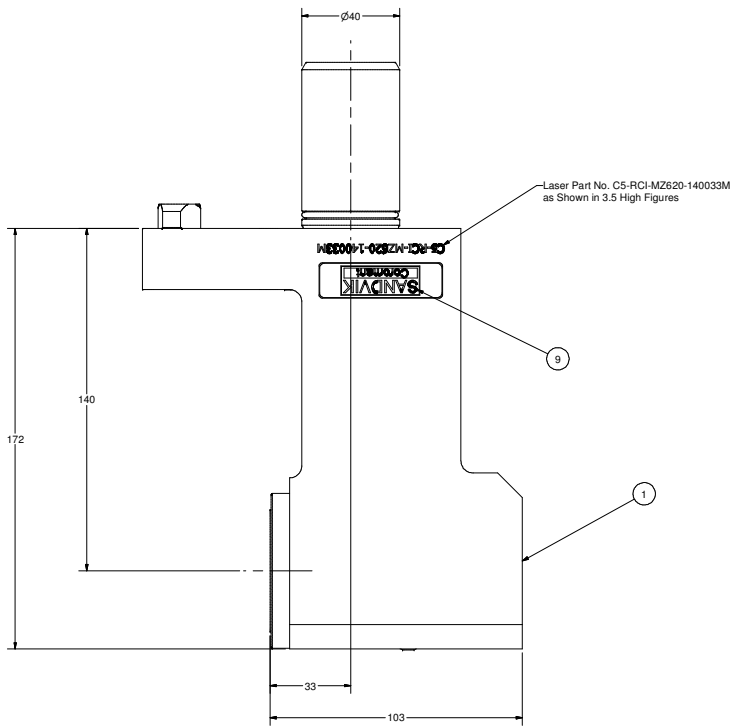
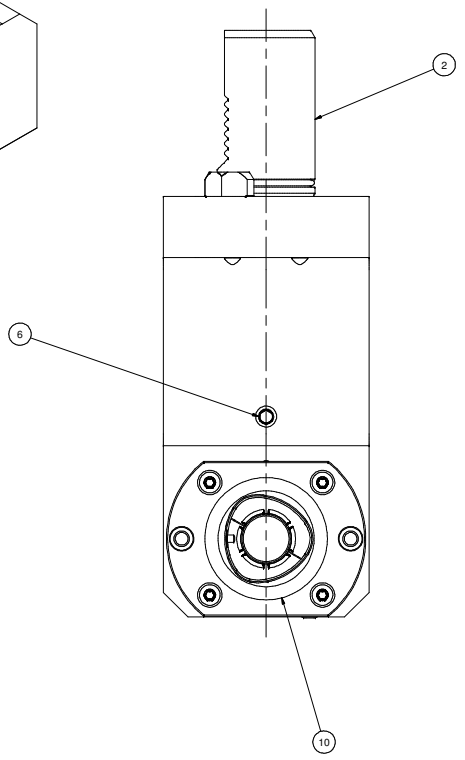


ITEM SHOWN IN THIS DOCUMENT CONTAIN PROPRIETARY INFORMATION OF PARLEG, INC. AND IS SUBJECT TO BEING RETURNED UPON REQUEST. IT SHALL NOT BE REPRODUCED IN WHOLE OR PART WITHOUT WRITTEN PERMISSION OF PARLEG, INC. ANY VIOLATION IS PROHIBITED UNDER THE ENFORCEABLE LEGISLATION.



Parts List			
ITEM	QTY	PART NUMBER	DESCRIPTION
1	1	C5-RCI-MZ620-140033M	C5 Internal R/H Reverse Tool Holder
2	1	217-14952-001	MP620 Static Shank
4	6	SHCSM8X16	CAP SCREW M8 X 16 LG
5	3	SSM6X6	SET SCREW M6 x 6
6	1	SSPLG0125BSPT	1/8" BSPT PIPE PLUG
8	1	202-652-4470	O-RING 54.5 x 3
9	1	LB-SANDVIK	SANDVIK LABEL
10	1	C5-CU-CS-11	CAPTO C5 CLAMPING UNIT, STATIC
11	1	196.13636.004	LOCATION PIN
12	1	DWLM10X24	DOWEL PIN, M10 X 24LG



		PART NAME C5 Internal R/H Reverse Tool Holder	
<small>BREAK ALL UNNECESSARY DIMENSIONS</small>		<small>UNIT: INCHES</small>	
<small>WORLD HEADQUARTERS 200 FORTY-NINTH AVENUE FAIRPORT, NEW YORK 14450</small>		<small>SCALE: NONE</small>	
<small>DATE: 3/20/2006</small>		<small>DATE: 3/20/2006</small>	
<small>DESIGNED BY: marcol</small>		<small>CHECKED BY:</small>	
PART NUMBER C5-RCI-MZ620-140033M		REV 1	