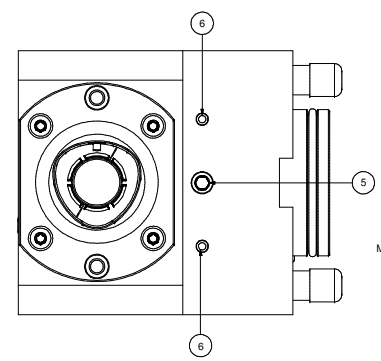
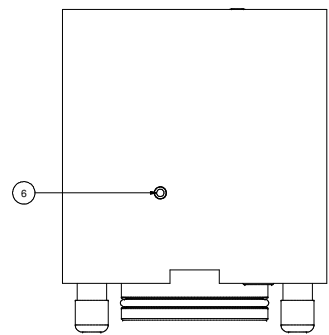
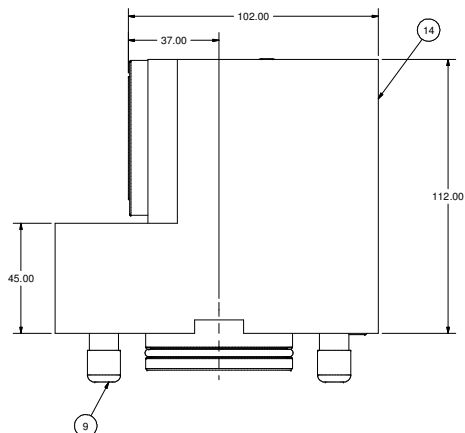
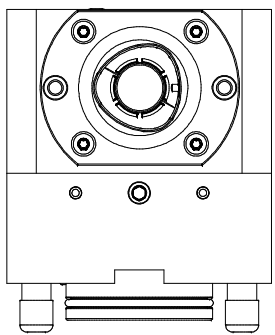
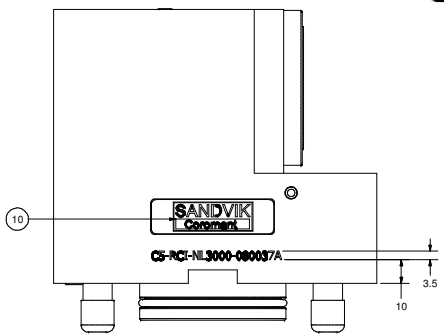
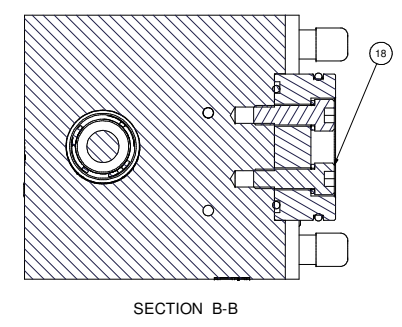
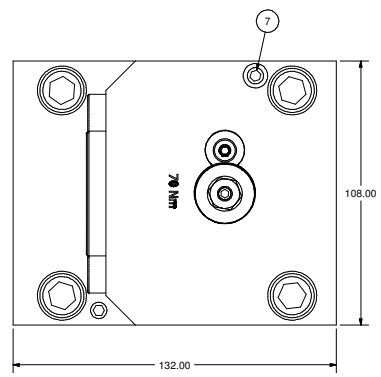
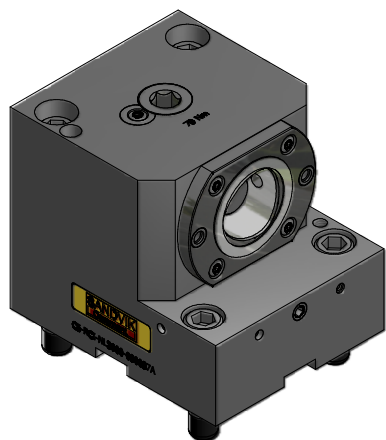
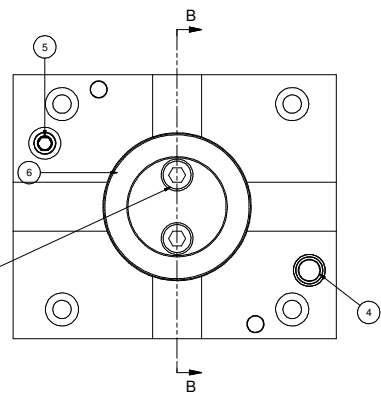


THIS DRAWING IS THE PROPERTY OF PARLEG INC. AND IS SUBJECT TO BEING RETURNED UPON REQUEST. IT SHALL NOT BE REPRODUCED IN WHOLE OR PART WITHOUT WRITTEN PERMISSION OF PARLEG INC. ANY VIOLATION IS PROHIBITED UNDER THE EYE OF THE LAW.

REVISION RECORD			
LET	DESCRIPTION	BY	DATE
A	RELEASED	TT	10/15/05
B	ECR #6279	ON	6/6/06



CLEAN WITH LOCTITE 7070
APPLY LOCTITE 262 PER
MANUFACTURER SPECIFICATION
(FIRST 3 THREADS MIN.)
TORQUE TO 39 Nm (2X)



Parts List			
ITEM	QTY	PART NUMBER	DESCRIPTION
4	1	204-009-4470	O-RING, 9 x 2
5	2	SSPLG012SBSP	1/8" BSPT PIPE PLUG
6	5	MB 600-050	KOENIG EXPANDER SEALING PLUG
7	2	SSM8X30	SET SCREW, FLAT POINT, M8 x 30
9	4	FCWA-0111-019	M12 THREAD CAP
10	1	LB-SANDVIK	SANDVIK LABEL
14	1	C5-080037A-1	BODY, BORING BAR HOLDER - CAPTO C5
15	1	CS-CU-CS-11	CAPTO C5 CLAMPING UNIT, STATIC
16	2	SHCSM12X50	CAP SCREW, M12 x 50
17	2	SHCSM12X110	CAP SCREW, M12 x 100
18	1	F73149	TOOL HOLDER PLUG ASSEMBLY

WEIGHT: 7.9KG

	PARLEG	DESCRIPTION: BORING BAR HOLDER, CAPTO C5 R.H.
MATERIAL: SEE BOM	SCALE: NONE	
FINISH: N/A	DATE: 10/15/05	
DESIGNED BY: T. TANGO	CHECKED BY:	
PART NUMBER: C5-RCI-NL3000-080037A	REV: B	