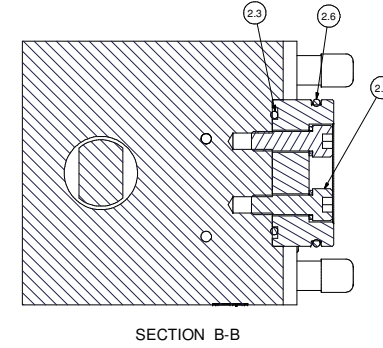
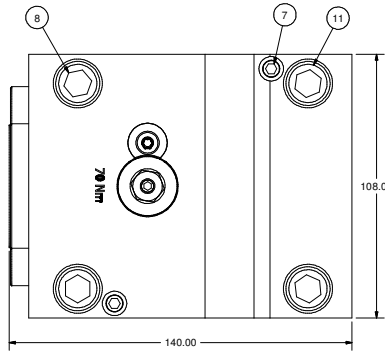
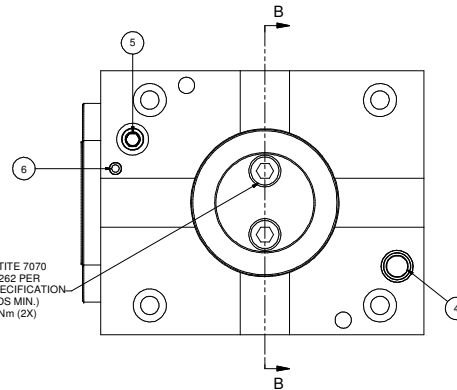
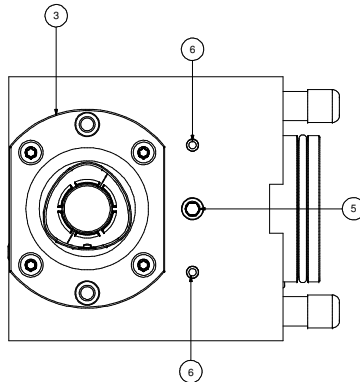
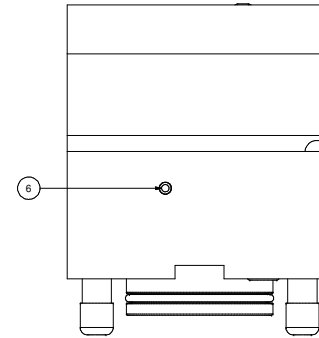
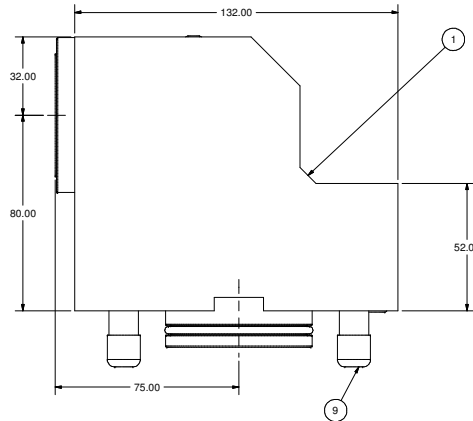
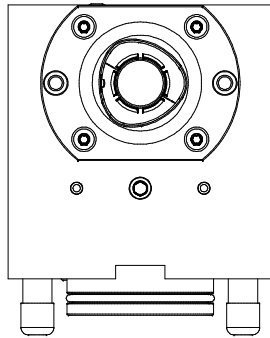
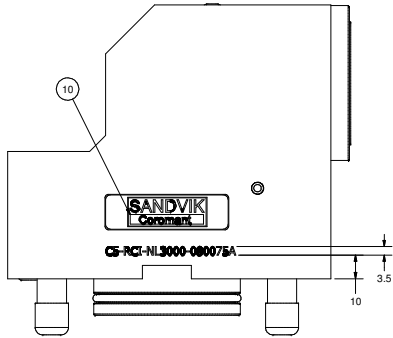


THIS DRAWING IS THE SOLE PROPERTY OF PARTEC INC. AND IS SUBJECT TO BEING RETURNED UPON REQUEST. IT SHALL NOT BE REPRODUCED IN WHOLE OR PART WITHOUT THE WRITTEN PERMISSION OF PARTEC INC. ANY VIOLATION IS SUBJECT TO PROSECUTION UNDER FEDERAL LAWS.



SECTION B-B



CLEAN WITH LOCTITE 7070
APPLY LOCTITE 262 PER
MANUFACTURER SPECIFICATION
(FIRST 3 THREADS MIN.)
TORQUE TO 39 Nm (2X)

WEIGHT: 7.9KG

REVISION RECORD		
REV	DESCRIPTION	BY DATE
A	RELEASED	TT 2005
B	ECR #8048	BAM 5/05
C	ECR #8141	BAM 7/05
D	ECR #8162	MW 8/05
E	ECR #8278	ON 5/06

Parts List			
ITEM	QTY	PART NUMBER	DESCRIPTION
1	1	C5-080075A-1	BODY, BORING BAR HOLDER - CAPTO C5
2.3	1	202-788-4470	O-RING 44.5 x 3
2.5	2	SHCSM8X25	CAP SCREW, M8 x 25
2.6	1	202-731-4470	O-RING 54.5 x 3
2.7	2	014-112	M8 LOCK WASHER
3	1	C5-CLJ-CS-11	CAPTO C5 CLAMPING UNIT, STATIC
4	1	204-009-4470	O-RING, 9 x 2
5	2	SSPLG0125BSPT	1/8" BSPT PIPE PLUG
6	5	MB 600-050	KOENIG EXPANDER SEALING PLUG
7	2	SSM8X30	SET SCREW, FLAT POINT, M8 x 30
8	2	SHCSM12X120	CAP SCREW, M12 x 120
9	4	FCWA-0111-019	M12 THREAD CAP
10	1	LB-SANDVIK	SANDVIK LABEL
11	2	SHCSM12X60	CAP SCREW, M12 x 60

		PART NAME: BORING BAR HOLDER, CAPTO C5 R.H. MATERIAL: SEE BOM FINISH: N/A DRAWN BY: T. TANDO	SCALE: NONE DATE: 11/2004
	WORLD HEADQUARTERS 210 FORTYFORTH PARKWAY FAIRPORT, NEW YORK 14450	PART NUMBER: C5-RCI-NL3000-080075A	DESIGNED BY: