

## CITIZEN TOOLING

---

# History

Parlec is established in Rochester N.Y., as a job shop specializing in the manufacturing of Sulky Hubs.

Parlec begins producing and distributing the Numertap and Autofacer product lines.

Parlec expands its product line with the introduction of Toolholders, which are sold as Numertap and Autofacer accessories.

The first Parsetter TMM is produced.

Parlec builds a new 42,000 square-foot, state-of-the-art manufacturing facility just outside of Rochester in Fairport, N.Y.

Parlec begins to manufacture and distribute its own line of Boring Tools.

Parlec becomes ISO 9001 certified. Parlec's sales triple from 1992-1997.

Parlec further enhances its product line to include Workholding. Construction of a 58,000 square-foot plant addition begins.

Parlec enters the Asian market with the opening of a sales and service office in Nanjing China.

Parlec acquires Bristol Tool. Driven and static tools are added to Parlec's extensive product line. A new sales, engineering and distribution facility opens in Bristol, England.

Parlec continues to expand its world wide footprint by opening a Wholly Owned Foreign Enterprise in Nanjing. This gives the company full sales, engineering, customer support and distribution capabilities on 3 continents.

■ 1948

■ 1973

■ 1977

■ 1980

■ 1985

■ 1992

■ 1997

■ 1998

■ 2003

■ 2004

■ 2006

# Parlec

## WORLDWIDE LEADER IN TOOLING, WORKHOLDING, AND PRESETTING SOLUTIONS

For more than fifty years, Parlec has been producing world-class products and solutions for our valued customers as well as fulfilling the needs of our employees who have made our success possible. In this mission, we continue to succeed as our sustained growth has demonstrated. Parlec is your total machining solution, and here's why:

### PRODUCTS

Six major product lines including solutions for toolholding, boring, tapping, presetting, workholding, and driven and static tooling. Over 8,000 individual products.

### SUPPORT

Worldwide engineering, service, manufacturing, and development support. Over 500 locations throughout the world offering sales, distribution, and product support.

#### NORTH AMERICA

101 Perinton Parkway  
Fairport, NY 14450

#### UNITED STATES

Tel: 585 425-4400  
Fax: 585 425-7542  
Tel: 800 866-5872  
Fax: 800 866-5917

#### EUROPE

Unit 'E' Syston Centre  
Station Rd., Kingswood  
Bristol, BS15 4GQ

#### UNITED KINGDOM

Tel: +44 (0) 117 967 4881  
Fax: +44 (0) 117 960 3800

#### ASIA

No. 360 Hushan Road  
Science Park  
Jiangning District  
Nanjing, China 211100

#### CHINA

Tel: 86-25-6661-2228  
Fax: 86-25-6661-2278

### MANUFACTURING

Over 120,000 square feet of manufacturing capabilities. Manufacturing expertise in North America, United Kingdom/Europe, and Asia to ensure the best service levels possible to our customers throughout the world.

### QUALITY

ISO 9001: 2000 Certified

*"That's what makes Parlec  
MEASURABLY BETTER"*

## DRIVEN & STATIC TOOLING

### K12 & K16

#### DRIVEN TOOLS

Part Number	Description	OEM Ref #	Output Spindle	Ratio	Speed Max	Coolant Type	Drawing Index #
GSE2007	DBL END FOUR SPIN-ER11-10,000RPM	GSE2007	ER11	1:1	10,000	Ext	1
GSS450	STR 50MM ARBOR TOOL-10,000RPM	GSS450	ER11	1:1	10,000	Ext	2

### M20, M32 SERIES 5

#### DRIVEN TOOLS

Part Number	Description	OEM Ref #	Output Spindle	Ratio	Speed Max	Coolant Type	Drawing Index #
259.15618.000	STRAIGHT EXT CLNT DRIVEN TOOL ER16	KSC110BT	ER16	1:1	5000	External	3
259.15707.000	STRAIGHT T/COOL DRIVEN TOOL ER16	-	ER16	1:1	5000	Internal	4
259.15613.000	90DEG EXT CLNT DRIVEN TOOL ER16	KSE310	ER16	1:1	5000	External	5
259.15708.000	90DEG T/COOL DRIVEN TOOL ER16	-	ER16	1:1	5000	Internal	6
259.15442.000	SLITTING SAW DRIVEN TOOL ASSEMBLY	KSS263BT	16mm Pilot with 63mm Max Cutter	3:1 Reducer	MIN 69 RPM Output MAX 1655 RPM Output	None	7
259.15441.000	ADJ 0-90 DEG ER11	-	ER11	1:1	200 MIN 5000 MAX	External	8

#### STATIC TOOLS

Part Number	Description	OEM Ref #	Drawing Index #
259.15443.000	TRIPLE BORING BAR HOLDER 1"	KDFZ401	9
259.74010.000	TRIPLE BORING BAR HOLDER 25MM - T/C	KDFZ401BMT	10
259.15612.000	TRIPLE BORING BAR HOLDER 1" - T/C	KDFZ401BT	11
259.15444.000	DOUBLE TURNING TOOL HLDR 16MM & 16MM	KTFZ216	12
259.15617.000	DBL TURN TOOL HLDR -EXT CLNT 16MM & 16MM	KTFZ216BT	13
259.15908.000	TRIPLE BORIN GBAR HLDR 1"-T/C & EXT CLNT	CDF901BT	14
259.15909.000	DBL TURN TOOL HLDR - EXT CLNT 2-16MM	CTF1116BT	15
259.15950.000	VERTICAL SLEEVE HOLDER	GDF909BT	16

### M32 SERIES 5 ONLY

#### DRIVEN TOOLS

Part Number	Description	OEM Ref #	Output Spindle	Ratio	Speed Max	Coolant Type	Drawing Index #
259.15906.000	M32-SER5 STR OFFSET 2 SPIN-ER16	KSC510BT	ER16	1:1	5000	None	17
259.15907.000	M32-SER5 90DEG EXT CLNT 2 SPINDLE-ER16	KSE201BT	ER16	1:1	5000	External	18

# Citizen Tooling

## L16, L20

### DRIVEN TOOLS

Part Number	Description	OEM Ref #	Output Spindle	Ratio	Speed Max	Coolant Type	Drawing Index #
000.15700.000	90DEG SLITTING HOLDER 12MM PILOT	GSS510BT-12MM	12MM PILOT	1:1	9500	None	19
000.15964.000	90DEG SLITTING HOLDER 13MM PILOT	GSS510BT-13MM	13MM PILOT	1:1	9500	None	20

### STATIC TOOLS

Part Number	Description	OEM Ref #	Drawing Index
000.15558.000	FACE DRILLING SLEEVE HOLDER	GDF607BT	21

## L25, L32 SERIES DRIVEN TOOLS

### DRIVEN TOOLS

Part Number	Description	OEM Ref #	Output Spindle	Ratio	Speed Max	Coolant Type	Drawing Index #
000.15183.000	STRAIGHT DRIVEN TOOL ER16	GSC310BT	ER16	1:1	9500	None	23
000.15181.000	90DEG DOUBLE END DRIVEN TOOL ER11	GXS310BT	ER11	1:1	9500	None	22
000.15291.000	90DEG SLITTING HOLDER 10MM PILOT	-	10mm Pilot	1:1	9500	None	24

## LC20-I, LC20-II, LC20-VII

### DRIVEN TOOLS

Part Number	Description	OEM Ref #	Output Spindle	Ratio	Speed Max	Coolant Type	Drawing Index #
000.15182.000	STRAIGHT DRIVEN TOOL ER16	GSC510BT	ER16	1:1	9500	None	26
000.15172.000	90DEG DOUBLE END DRIVEN TOOL ER11	GXS510BT	ER11	1:1	9500	None	25

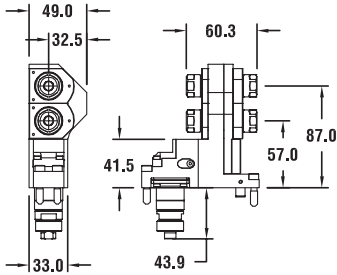
## C16

### DRIVEN TOOLS

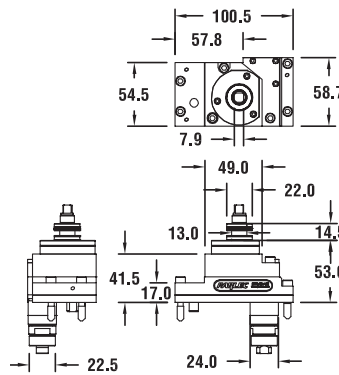
Part Number	Description	OEM Ref #	Output Spindle	Ratio	Speed Max	Coolant Type	Drawing Index #
258.15986.000	90DEG DOUBLE ENDER - 4,000 RPM	GSE707	ER11	1:1	9500	None	27

### DRAWING INDEX

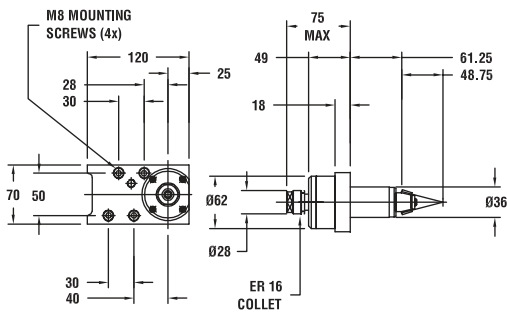
**INDEX NUMBER: 1**  
GSE2007



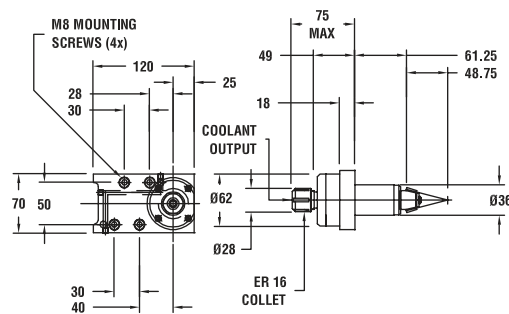
**INDEX NUMBER: 2**  
GSS450



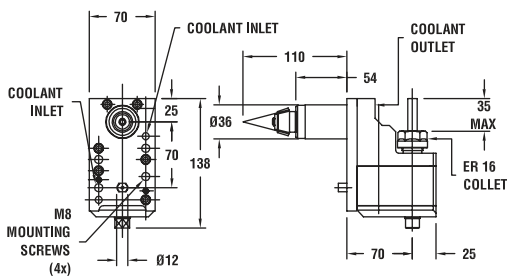
**INDEX NUMBER: 3**  
259.15618.000



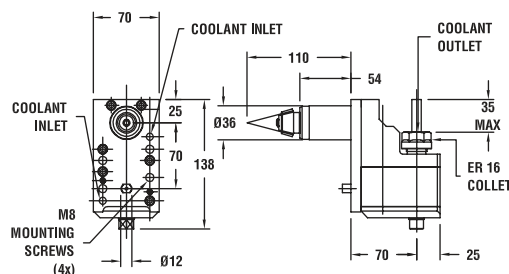
**INDEX NUMBER: 4**  
259.15707.000



**INDEX NUMBER: 5**  
259.15613.000



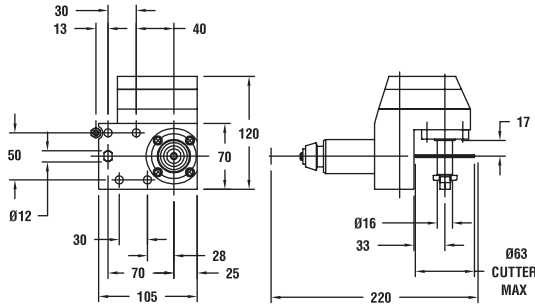
**INDEX NUMBER: 6**  
259.15708.000



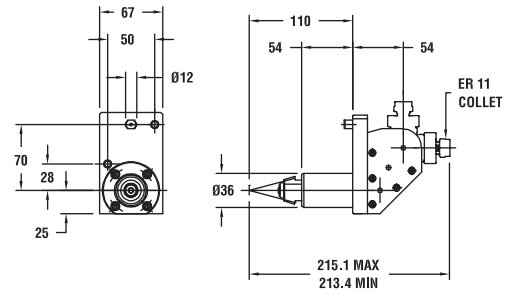
# Citizen Tooling

## DRAWING INDEX (CONTINUED)

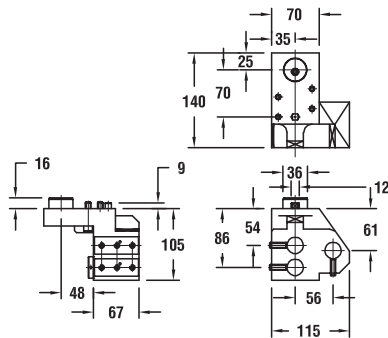
**INDEX NUMBER: 7**  
259.15442.000



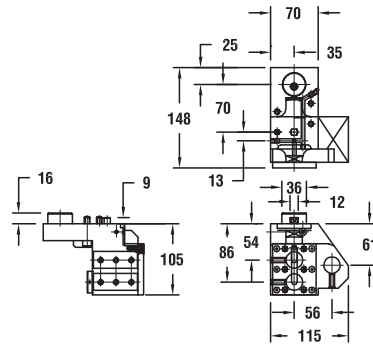
**INDEX NUMBER: 8**  
259.15441.000



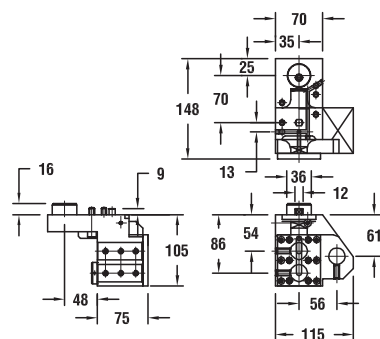
**INDEX NUMBER: 9**  
259.15443.000



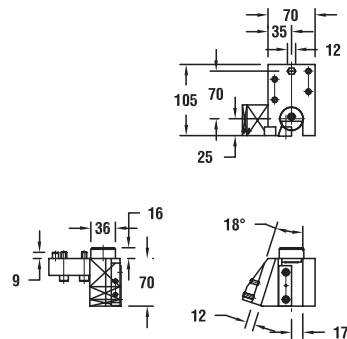
**INDEX NUMBER: 10**  
259.74010.000



**INDEX NUMBER: 11**  
259.15612.000

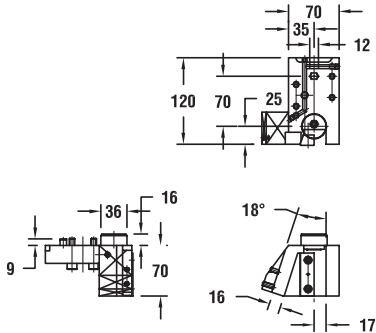


**INDEX NUMBER: 12**  
259.15444.000

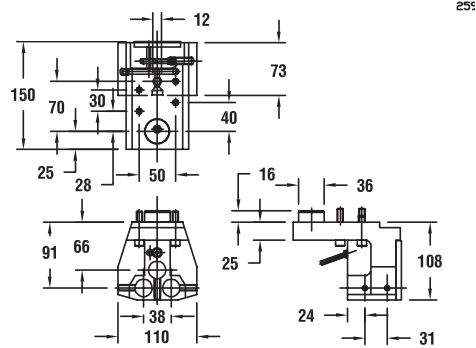


### DRAWING INDEX (CONTINUED)

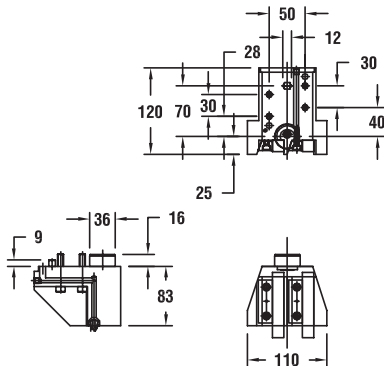
**INDEX NUMBER: 13**  
259.15617.000



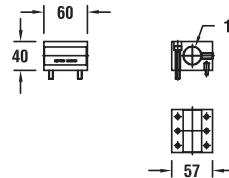
**INDEX NUMBER: 14**  
259.15908.000



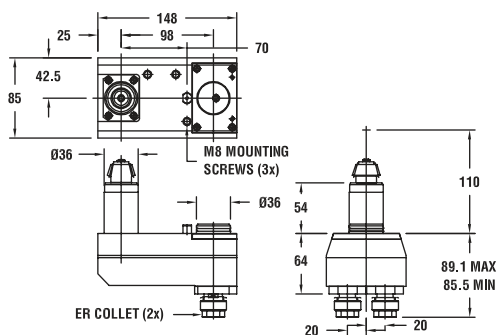
**INDEX NUMBER: 15**  
259.15909.000



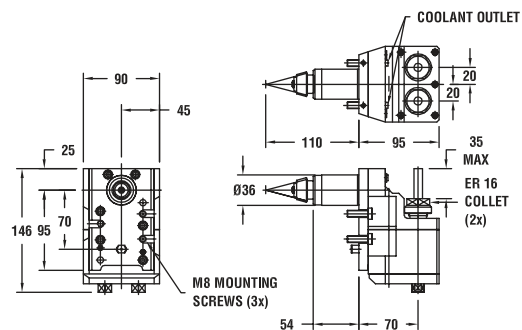
**INDEX NUMBER: 16**  
259.15950.000



**INDEX NUMBER: 17**  
259.15906.000



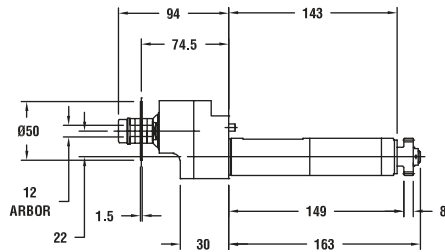
**INDEX NUMBER: 18**  
259.15907.000



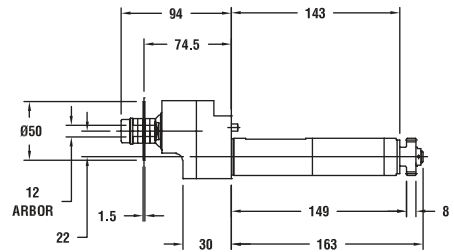
# Citizen Tooling

## DRAWING INDEX (CONTINUED)

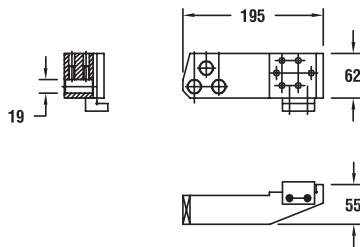
**INDEX NUMBER: 19**  
000.15700.000



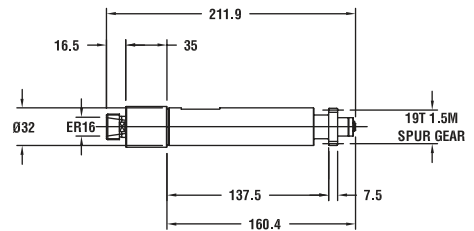
**INDEX NUMBER: 20**  
000.15964.000



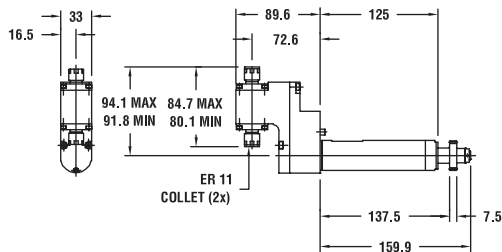
**INDEX NUMBER: 21**  
000.15558.000



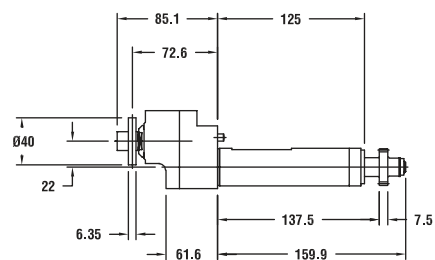
**INDEX NUMBER: 22**  
000.15183.000



**INDEX NUMBER: 23**  
000.15181.000



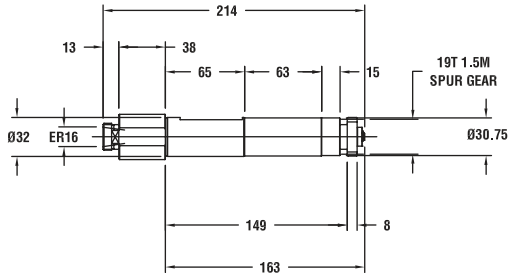
**INDEX NUMBER: 24**  
000.15291.000



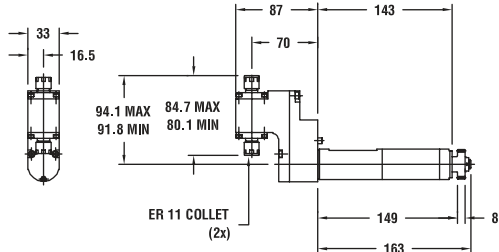
**DRAWING INDEX** (CONTINUED)

**DRIVEN & STATIC TOOLING**

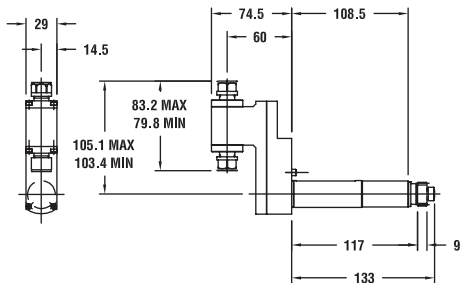
**INDEX NUMBER: 25**  
000.15182.000



**INDEX NUMBER: 26**  
000.15172.000

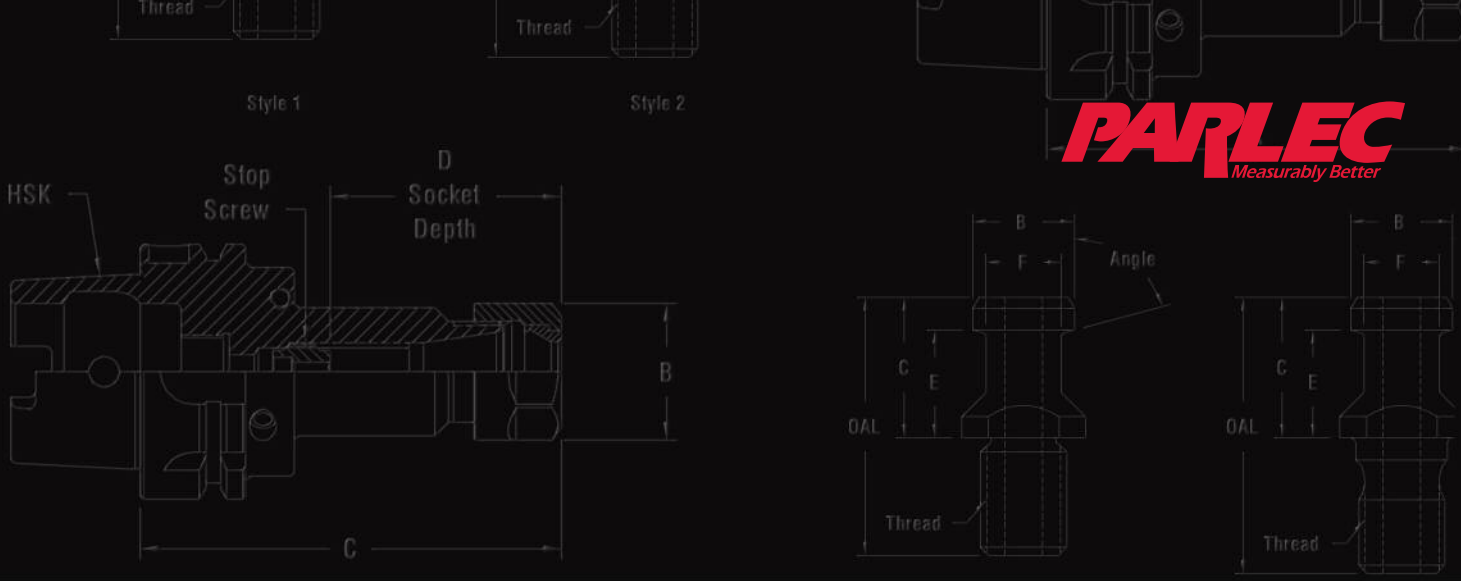


**INDEX NUMBER: 27**  
258.15986.000



# Notes

---

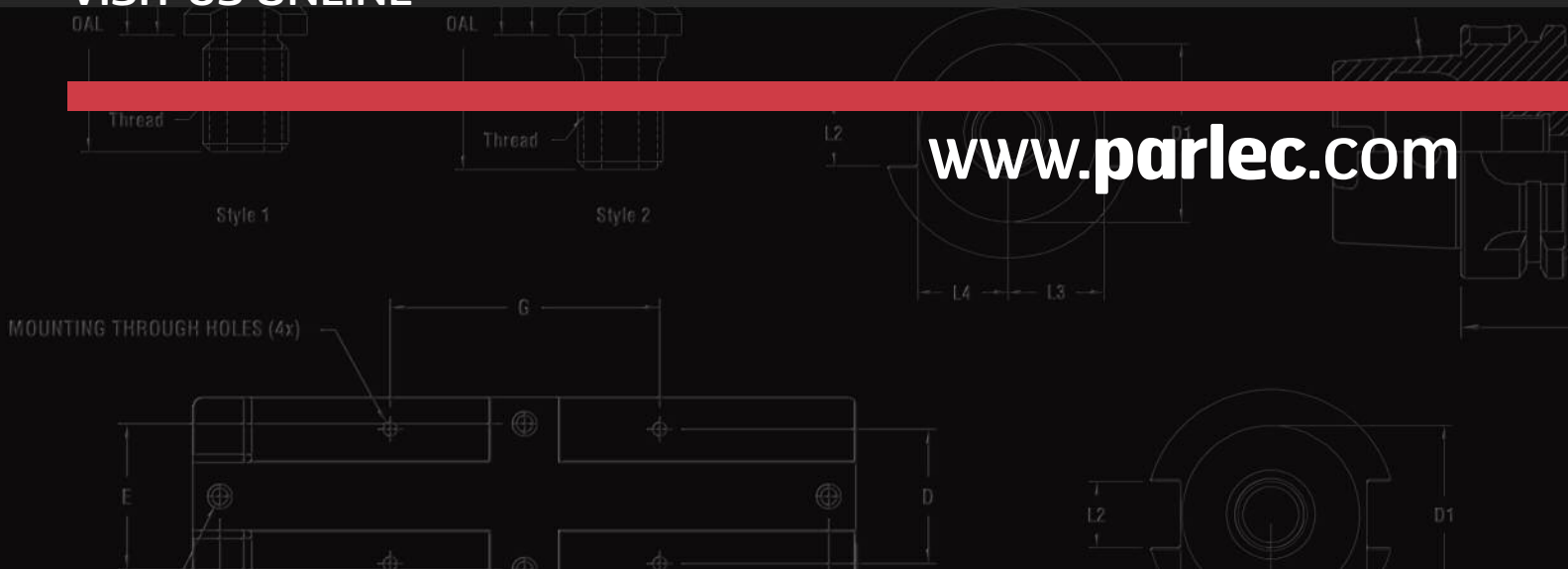


TOOLHOLDING • TAPPING • BORING • WORKHOLDING • DRIVEN & STATIC • PRESETTING



VISIT US ONLINE

[www.parlec.com](http://www.parlec.com)





Your **total** machining solution.

**PARLEC WORLD HEADQUARTERS**

101 Perinton Parkway  
Fairport, NY 14450

**UNITED STATES**

Tel: 585 425-4400  
Fax: 585 425-7542  
Tel: 800 866-5872  
Fax: 800 866-5917

**PARLEC EUROPE**

Unit 'E' Syston Centre  
Station Rd., Kingswood  
Bristol, BS15 4GQ

**UNITED KINGDOM**

Tel: +44 (0) 117 967 4881  
Fax: +44 (0) 117 960 3800

**PARLEC ASIA**

No. 360 Hushan Road  
Science Park  
Jiangning District  
Nanjing, China 211100

**CHINA**

Tel: 86-25-6661-2228  
Fax: 86-25-6661-2278

