



# DRIVEN & STATIC TOOLING | HAAS





# Table of Contents

## HAAS TOOLING

SL20, SL30 – Standard VDI Turret Driven Tools

SL20, SL30 – Haas Turret Driven Tools

SL20, SL30, TL15, TL25 – Hybrid Turret Driven Tools

SL40, ST20, ST30 – Standard VDI Turret Driven Tools . . . . . 3

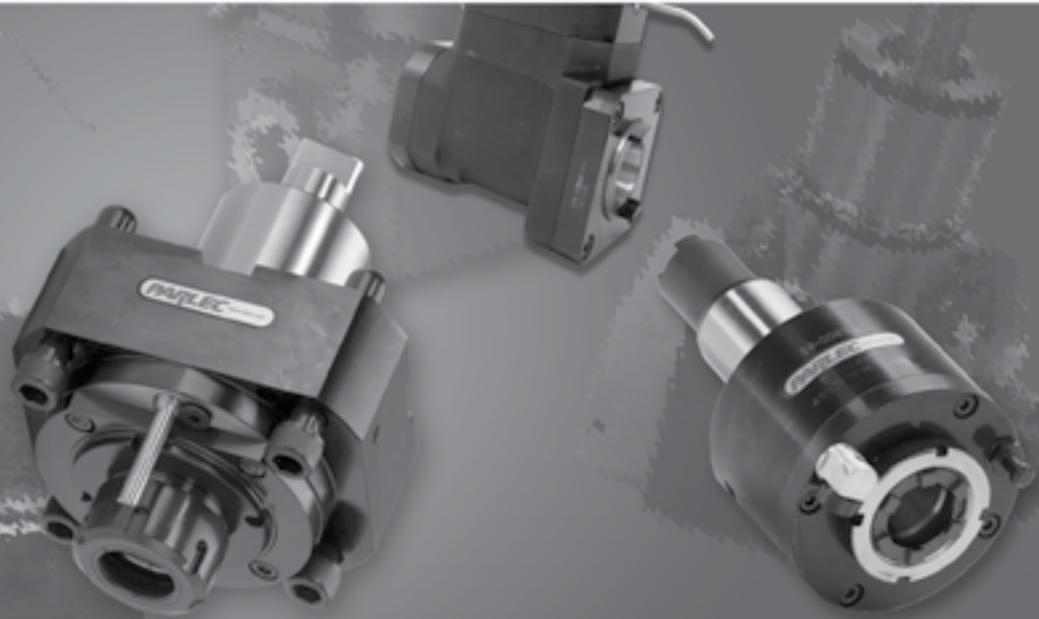
SL40 – Hybrid & Haas Turret Driven & Static Tools . . . . . 4

**TOOLING REBUILD SERVICE** . . . . . 6



HAAS

# Driven & Static



## All tools are not created equal!

Innovative engineering is a cornerstone in the development of Parlec Driven & Static Tooling. Parlec tools are engineered to run at higher speeds and last longer than our competition – Just what you would expect from the worldwide leader in tooling, workholding, and presetting solutions.

### ■ Dedication To Technology

Today Parlec is incorporating Supermill® technology into every tool we manufacture. Supermill technology is producing tools that provide superior surface finishes, increased rigidity, increased speed and feed rates, longer cutter lengths, and longer tool life over conventional tools.

### ■ Bearing Technology

Parlec uses only the highest grade of bearings in every tool to ensure the longest possible bearing life and maximum rigidity on the input and output spindles of a tool.

### ■ Seal Technology

By incorporating the latest advances in seal technology we have produced tools that can run at higher speeds and last longer than our competition.

### ■ Worldwide Commitment

Parlec offers factory support around the world and has over 500 locations globally offering sales, distribution, and product support.





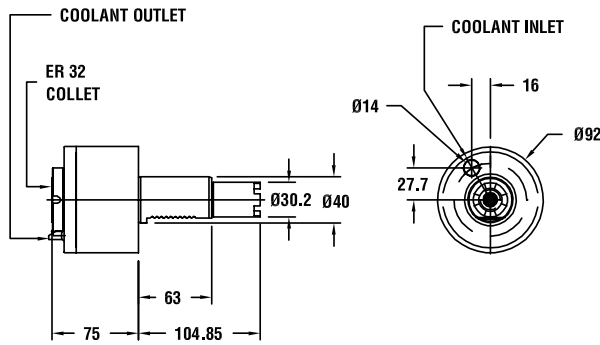
SL20, SL30 – STANDARD VDI TURRET

DRIVEN TOOLS

Part Number	Description	OEM Ref #	Output Spindle	Ratio	Max. Torque	Speed Max	Coolant Type	Drawing Index #
59-0083	AXIAL TOOL 40VDI	59-0083	ER32	1:1	65 Nm	4500	External	1
59-0085	RADIAL TOOL 40VDI	59-0085	ER32	1:1	65 Nm	4500	External	2

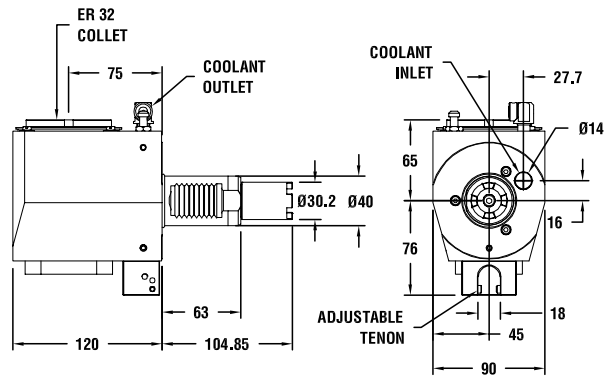
INDEX NUMBER: 1

59-0083



INDEX NUMBER: 2

59-0085



SL20, SL30 - HAAS TURRET\*  
 SL20, SL30, TL15, TL25 - HYBRID TURRET  
 SL40, ST20, ST30 - STANDARD VDI TURRET

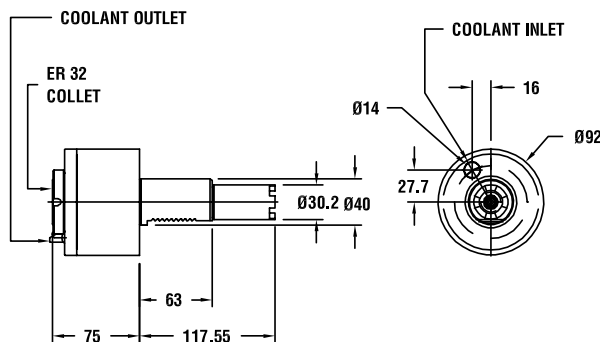
DRIVEN TOOLS

Part Number	Description	OEM Ref #	Output Spindle	Ratio	Max. Torque	Speed Max	Coolant Type	Drawing Index #
59-0082	AXIAL TOOL 40VDI	59-0082	ER32	1:1	65 Nm	4500	External	3
59-0084	RADIAL TOOL 40VDI	59-0084	ER32	1:1	65 Nm	4500	External	4
371.15859.000	HAAS ADAPTER PLATE-VDI40 TO HAAS TURRET	-	-	-	-	-	-	-

\*NOTE: HAAS TURRETS REQUIRE ADAPTER PLATE 371.15859.000

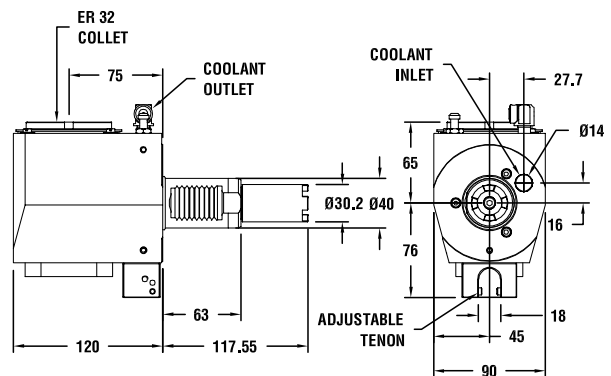
INDEX NUMBER: 3

59-0082



INDEX NUMBER: 4

59-0084





## SL40 – HYBRID & HAAS TURRET\*

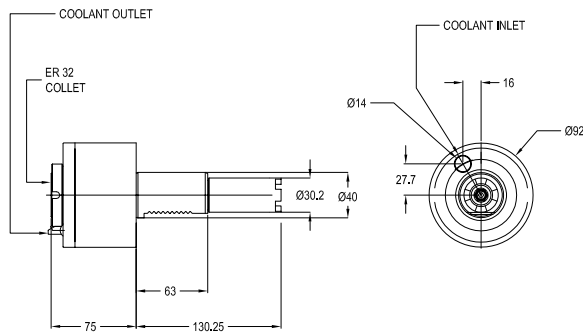
### DRIVEN TOOLS

Part Number	Description	OEM Ref #	Output Spindle	Ratio	Max. Torque	Speed Max	Coolant Type	Drawing Index #
59-6352	AXIAL TOOL 40VDI	59-6352	ER32	1:1	65 Nm	4500	External	5
59-6353	RADIAL TOOL 40VDI	59-6353	ER32	1:1	65 Nm	4500	External	6
371.15859.000	HAAS ADAPTER PLATE-VDI40 TO HAAS TURRET	-	-	-	-	-	-	-

\*NOTE: HAAS TURRETS REQUIRE ADAPTER PLATE 371.15859.000

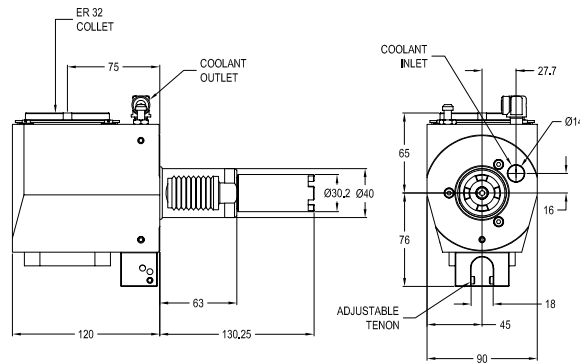
#### INDEX NUMBER: 5

59-6352



#### INDEX NUMBER: 6

59-6353



### STATIC TOOLS

Part number	Description	Drawing Index #
B2-40X1.000X44	1" TURNING TOOL HLDR L/H SHORT	-
B2-40X25X44	25MM TURNING TOOL HLDR L/H SHORT	-
B6-40X1.000X44	1" TURNING TOOL HLDR L/H LONG	-
B6-40X25X44	25MM TURNING TOOL HLDR L/H LONG	-
E2-40X1.250	BORING BAR HOLDER 1-1/4"	-
E2-40X20	BORING BAR HOLDER 20MM	-
E2-40X25	BORING BAR HOLDER 25MM	-
E2-40X30	BORING BAR HOLDER 30MM	-
E2-40X32	BORING BAR HOLDER 32MM	-
E2-40X40	BORING BAR HOLDER 40MM	-
Z2-40S	TURRET PLUG -STEEL	-
VDI THKIT	VDI STARTUP KIT INCLUDES: (2) B2-40X1.000X44 (1) B6-40X1.000X44 (3) E2-40X1.250 (2) Z2-40S	-
VDI THKIT-M	METRIC VDI STARTUP KIT INCLUDES: (2) B2-40X25X44 (1) B6-40X25X44 (3) E2-40X32 (2) Z2-40S	-



Notes



### **TIRED OF WAITING WEEKS AND MONTHS TO HAVE YOUR TOOLS SHIPPED TO THE FACTORY?**

We offer rebuild services in North America and Europe. Evaluations are complete within 3–5 days of receipt of the tool and a standard repair is complete within 10 days of customer approval. Emergency tool repairs are also available for customers who have machines down due to broken tools.

### **CAN I REPAIR THE TOOLS MYSELF OR PURCHASE COMPONENTS FOR PARLEC TOOLS?**

- We are willing to supply components on all Parlec tools but do not recommend that you try the repair yourself. There is a lot more to a repair than just changing a component.
  
- Our assembly team is trained in:
  - Tool Design and Failure Modes
  - Bearing Failure Analysis
  - Seal Technology & Wear Analysis
  - Gear Failure Analysis
  - Tool Assembly, Preloads, Tool Break In and Tool Inspection
  
- This allows us to identify the root cause of the failure so that it does not cause premature tool failure in the future.

### **ECONOMICAL – REBUILDS**

Economical – rebuilds typically cost 50% or less than the cost of a new tool and come with Parlec’s standard 6-month warranty on components we repair or replace.

### **PARLEC OFFERS REBUILD SERVICES ON ALL MAKES AND MODELS OF DRIVEN AND STATIC TOOLS.**

How can Parlec rebuild competitor’s tools? The majority of tools that we repair have worn seals and bearings as the root cause of problem. This means that we have access to the same components that were supplied with the original tool. Should there be a failure in an OEM proprietary component that we do not have access to then we would recommend that you send the tool back to the manufacturer.

### **WHAT TO DO?**

- Send us your tool marked “Repair Evaluation”, to:  
**Parlec Inc.**  
101 Perinton Parkway  
Fairport, NY 14450, USA
  
- Be sure to include your company name and contact information and the make and model of the machine that the tool is used on inside the box.

### **6 MONTH WARRANTY ON EVERY TOOL**

- All tools are calibrated in accordance with Parlec’s ISO 9001:2000 Quality System
- Free estimate on every tool
- Repairs available on all makes & models of tool
- Over 20 years of experience in repairing driven and static tools
- Annual maintenance contracts available





**PARLEC** | BY ANY MEASURE  
Measurably Better

**Americas**

Tel: 585-425-4400  
Fax: 585-425-7542

**Asia Pacific**

Tel: 86-25-6661-2228  
Fax: 86-25-6661-2278

**Europe**

Tel: 01-585-425-4400  
Fax: 01-585-425-7542

**Headquarters**

101 Perinton Parkway  
Fairport, NY 14450 USA

For a quotation, please contact 1-800-TOOL-USA (1-800-866-5872) or visit [www.parlec.com](http://www.parlec.com).