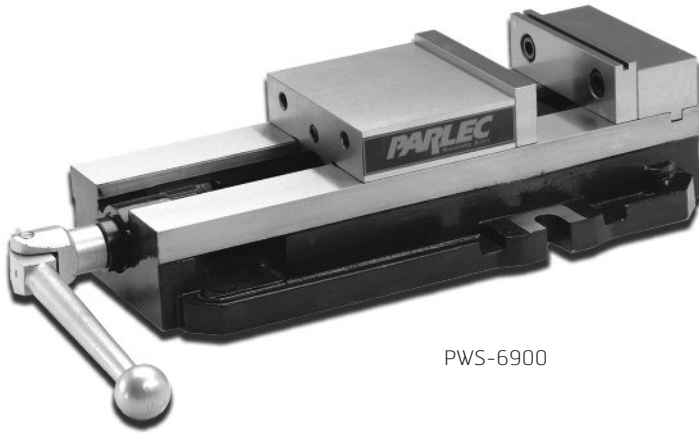


# PWS-6900



PWS-6900

## PWS-6900 HAS IT ALL

With the largest jaw opening in its class of nine inches, Parlec's newest PWS-6900 vise also offers an angled slide and locking jaw design to prevent lifting of the movable jaw. Improving on industry standards, Parlec's vise provides a more rigid stationary jaw and robust main screw that can handle higher torque loads than other vises in the marketplace. The PWS-6900 sets the standard for quality in the marketplace and is fully backed by the Parlec 10-year warranty.

### SWIVEL BASE

Part Number	Description
PWS-6900SB-KIT	Swivel Base

### WORK STOPS

Part Number	Description
PWS-WSA	Adjustable Work Stop
PWS-WSS	Small Work Stop



### HANDLES

Part Number	Description
PWS-6900-HANDLE	Replacement Handle
P6HA-SH	Speed Handle
P6HA-TH	Torque Handle w/ 3/4 Hex (810)



## MORE ADVANTAGES

- Up to 8,200 lbs. (37,800 N) of clamping force!
- 10 year limited warranty.
- Bed height matched to size 2.875" (73.025mm+/-0.013) +/-0.0005"
- Repeatability within 0.001" (0.025mm)
- Hardened vise bed and jaw plates.
- Outside rail edges of the body are machined.
- Footprint and distance from keyway to stationary jaw same as competition.
- Sealed bearing system reduces clamping pressure and increases bearing life.
- Stationary jaw has machined keyway for alignment of the vise and includes alignment rail for quick setups.
- Parlec's PWS-6900 has a larger opening than comparable models.
- Priced 25% less than comparable models!
- Why pay extra for a brand name when Parlec sells a higher quality vise for less?

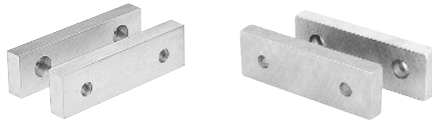
## WORKHOLDING

WORKHOLDING

# PWS-6900



PWS-6900-JAWSET



## INCREASE YOUR UTILIZATION!

Parlec's new PWS-6900 fixture plates give you the advantage of faster setups, increased capacity and when used as a pallet system allows the operator to load parts offline while the machine is running. All of this adds up to increased production and revenues.

### FEATURES

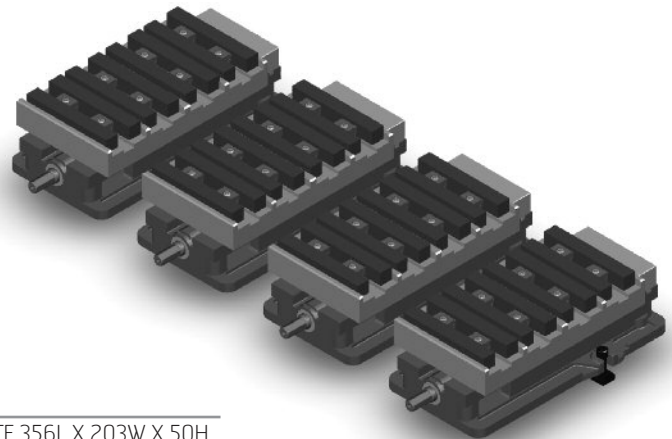
- Repeatable to 0.001"
- Mounts on any PWS-6900 type vise.
- Quick change plate with no screws to remove.
- Fixture plates are 6061-T6 aluminum to allow for customization.
- Stainless steel mounting hardware for ultimate repeatability and long working life.

### FIXTURE PLATES

Part Number	Description
PFP-6900-350.200.50	PWS-6900 FIXTURE PLATE 356L X 203W X 50H
PFP-6900-350.250.50	PWS-6900 FIXTURE PLATE 356L X 254W X 50H
PFP-6900-350.300.50	PWS-6900 FIXTURE PLATE 356L X 305W X 50H
PFP-6900-400.200.50	PWS-6900 FIXTURE PLATE 406L X 203W X 50H
PFP-6900-400.250.50	PWS-6900 FIXTURE PLATE 406L X 254W X 50H
PFP-6900-400.300.50	PWS-6900 FIXTURE PLATE 406L X 305W X 50H
PFPD-6900-350.500.50	PWS-6900 FIXTURE PLATE 356L X 508W X 50H
PFPD-6900-350.600.50	PWS-6900 FIXTURE PLATE 356L X 610W X 50H
PFPD-6900-400.500.50	PWS-6900 FIXTURE PLATE 406L X 508W X 50H
PFPD-6900-400.600.50	PWS-6900 FIXTURE PLATE 406L X 610W X 50H

### JAWS

Part Number	Description
PWS-6900-JAWSET	PWS-6900 Replacement Jaws
<b>P6JS-3/4-2-6</b>	PWS-6900 JAW - STEEL - 3/4W 2H 6L
P6JS-1-2-6	PWS-6900 JAW - STEEL - 1W 2H 6L
P6JS-1.25-2-6	PWS-6900 JAW - STEEL - 1-1/4W 2H 6L
P6JS-1.5-2-6	PWS-6900 JAW - STEEL - 1-1/2W 2H 6L
P6JS-2-2-6	PWS-6900 JAW - STEEL - 2W 2H 6L
<b>P6JS-1-2-12</b>	PWS-6900 JAW - STEEL - 1W 2H 12L
P6JS-1.24-2-12	PWS-6900 JAW - STEEL - 1-1/4W 2H 12L
<b>P6JS-1-3-6</b>	PWS-6900 JAW - STEEL - 1W 3H 6L
P6JS-2-3-6	PWS-6900 JAW - STEEL - 2W 3H 6L
<b>P6JS-1-4-6</b>	PWS-6900 JAW - STEEL - 1W 4H 6L
P6JS-1.5-4-6	PWS-6900 JAW - STEEL - 1-1/2W 4H 6L
P6JS-2-4-6	PWS-6900 JAW - STEEL - 2W 4H 6L
<b>P6JA-3/4-2-6</b>	PWS-6900 JAW - ALUMINUM - 3/4W 2H 6L
P6JA-1-2-6	PWS-6900 JAW - ALUMINUM - 1W 2H 6L
P6JA-1.25-2-6	PWS-6900 JAW - ALUMINUM - 1-1/4W 2H 6L
P6JA-1.5-2-6	PWS-6900 JAW - ALUMINUM - 1-1/2W 2H 6L
P6JA-2-2-6	PWS-6900 JAW - ALUMINUM - 2W 2H 6L
<b>P6JA-1-2-12</b>	PWS-6900 JAW - ALUMINUM - 1W 2H 12L
P6JA-1.24-2-12	PWS-6900 JAW - ALUMINUM - 1-1/4W 2H 12L
<b>P6JA-1-3-6</b>	PWS-6900 JAW - ALUMINUM - 1W 3H 6L
P6JA-2-3-6	PWS-6900 JAW - ALUMINUM - 2W 3H 6L
<b>P6JA-1-4-6</b>	PWS-6900 JAW - ALUMINUM - 1W 4H 6L
P6JA-1.5-4-6	PWS-6900 JAW - ALUMINUM - 1-1/2W 4H 6L
P6JA-2-4-6	PWS-6900 JAW - ALUMINUM - 2W 4H 6L

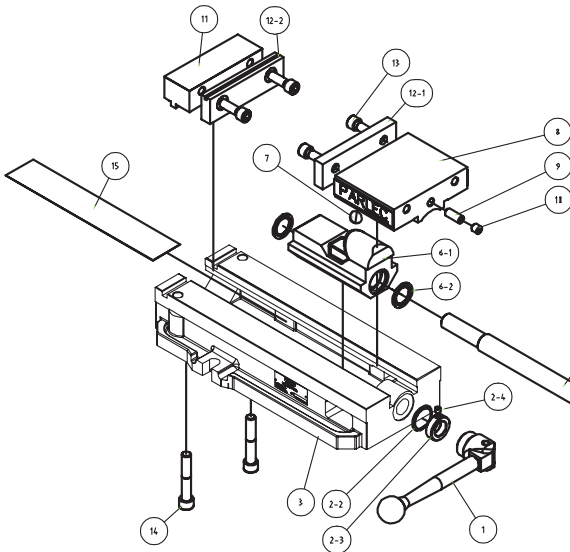


# PWS-6900

## Assembly & Specification Drawings



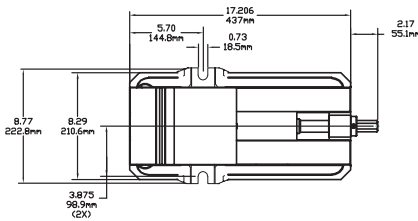
### WORKHOLDING



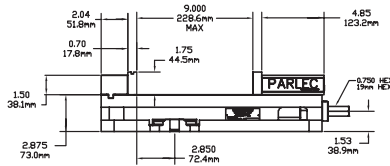
Item	Description	Qty.	Name
1	Handle Assembly - 3/4"	1	PWS-6900-Handle
1-1	Handle Socket	1	Order Kit #PWS-6900-Handle
1-2	Handle Bar	1	Order Kit #PWS-6900-Handle
1-3	Spring Holder	1	Order Kit #PWS-6900-Handle
2	Main Screw Assembly	1	PWS-6900-002
2-1	Main Screw	1	Order Kit #PWS-6900-002
2-2	Collar Spring	1	Order Kit #PWS-6900-002
2-3	Collar	1	Order Kit #PWS-6900-002
2-4	Collar Set Screw	1	Order Kit #PWS-6900-002
3	Body	1	PWS-6900-003

4	Bearing Assembly	1	PWS-6900-004
5	O-Ring	1	PWS-6900-005
6	Vise Nut Assembly	1	PWS-6900-006
6-1	Vise Nut	1	Order Kit #PWS-6900-006
6-2	Brush	2	Order Kit #PWS-6900-006
7	Semi-Sphere Segment	1	PWS-6900-007
8	Movable Jaw	1	PWS-6900-008
9	Set Screw	1	PWS-6900-009
10	Set Screw, Locking	1	PWS-6900-010
11	Fixed Jaw	1	PWS-6900-011
12	Jaw Assembly	1	PWS-6900-Jawset
12-1	Front Jaw	1	Order Kit #PWS-6900-Jawset
12-2	Rear Fixed Jaw	1	Order Kit #PWS-6900-Jawset
13	Soft Jaw Bolt	4	PWS-6900-013
14	Fixed Jaw Bolt	2	PWS-6900-014
15	Slide Cover	1	PWS-6900-015

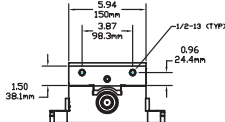
TOP VIEW



SIDE VIEW



FRONT VIEW



JAW PLATE POSITION



WORKHOLDING