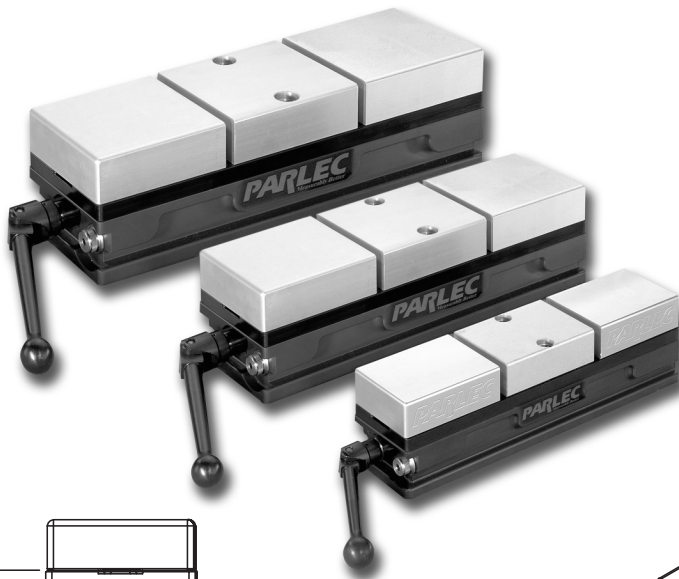


# Lay-Down Vise

## Vertical Machining

### WORKHOLDING



**200mm Vise:**  
**PWS-20002**

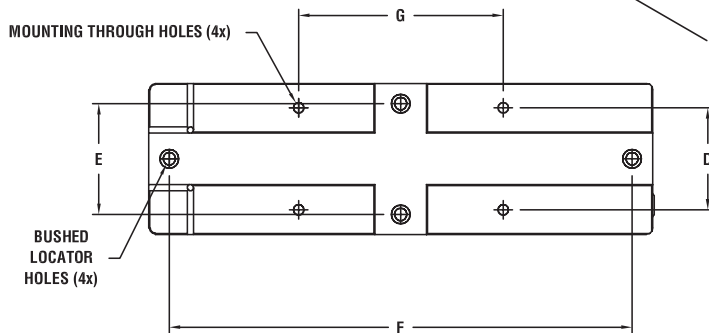
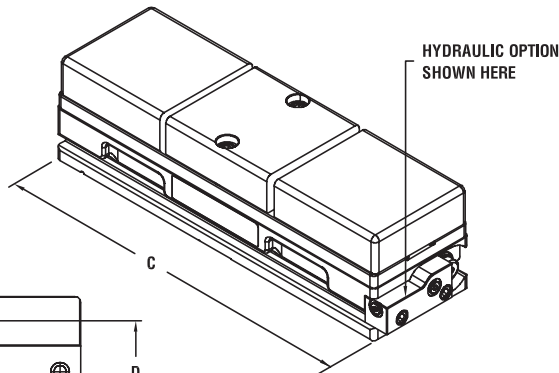
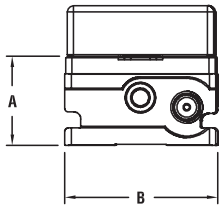
- 13.5mm Through-Holes
- 12mm Dowel Locator Bushing

**150mm Vise:**  
**PWS-15502**

- 11mm Through-Holes
- 12mm Dowel Locator Bushing

**100mm Vise:**  
**PWS-10402**

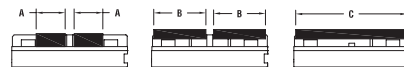
- 9mm Through-Holes
- 12mm Dowel Locator Bushing



Part Number	Size (mm)	Weight (lbs.)	A (mm)	B (mm)	C (mm)	D (mm)	E (mm)	F (mm)	G (mm)	Max. Clamping Force	Maximum Pressure (PSI)
<b>PWS-10402</b>	100	31	69.85	100.00	400.00	69.86	75.00	370.00	203.20	6,000	—
<b>PWS-10402H*</b>	100	31	69.85	100.00	417.72	69.86	75.00	370.00	203.20	5,000	5,400 input pressure
<b>PWS-15502</b>	150	66	88.94	150.00	500.38	101.60	110.00	460.00	203.20	11,000	—
<b>PWS-15502H*</b>	150	66	88.94	150.00	520.80	101.60	110.00	460.00	203.20	10,000	5,400 input pressure
<b>PWS-20002</b>	200	105	115.05	197.01	670.00	135.10	152.40	609.60	270.00	16,000	—

### DIMENSIONS

Description	100mm Vise	150mm Vise	200mm Vise
A – Between towers	100mm (3.4")	125mm (4.4")	147.3mm (5.8")
B – Max. Double-station	180mm (7.1")	225mm (8.9")	292.1mm (11.5")
C – Max. Single-station	380mm (15")	480mm (18.9")	645.2mm (25.4")



### CAPACITY

\* Hydraulic option.  
Part numbers in **bold face** are in-stock items.