

# Lay-Down Vice

## Vertical Machining



### WORKHOLDING

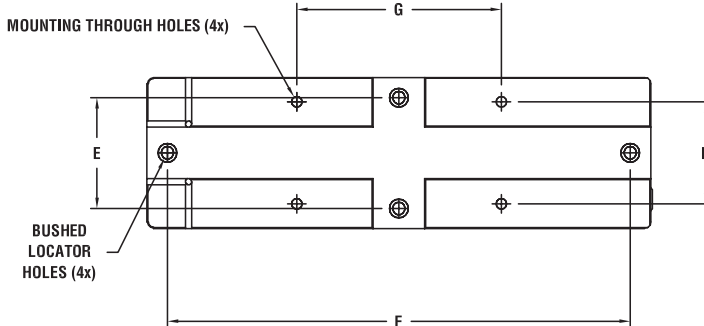
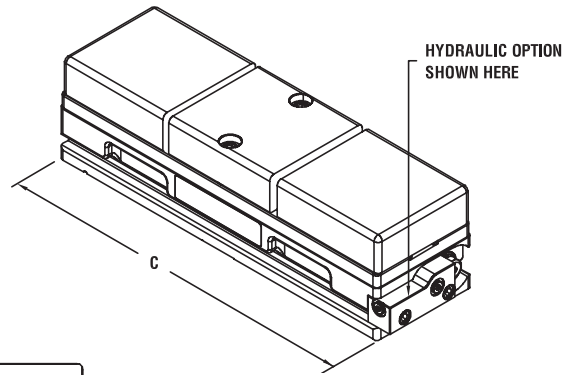
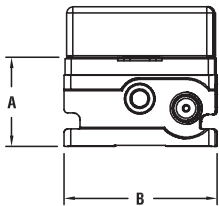


#### 150mm Vice: PWS-15502

- 11mm Through-Holes
- 12mm Dowel Locator Bushing

#### 100mm Vice: PWS-10402

- 9mm Through-Holes
- 12mm Dowel Locator Bushing

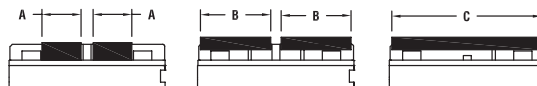


### DIMENSIONS

Part Number	Size (mm)	Weight (lbs.)	A (mm)	B (mm)	C (mm)	D (mm)	E (mm)	F (mm)	G (mm)	Max. Clamping Force	Maximum Pressure (PSI)
<b>PWS-10402</b>	100	31	69.85	100.00	400.00	69.86	75.00	370.00	203.20	6,000	-
PWS-10402H*	100	31	69.85	100.00	417.72	69.86	75.00	370.00	203.20	5,000	5,400 input pressure
<b>PWS-15502</b>	150	66	88.94	150.00	500.38	101.60	110.00	460.00	203.20	11,000	-
PWS-15502H*	150	66	88.94	150.00	520.80	101.60	110.00	460.00	203.20	10,000	5,400 input pressure

### CAPACITY

Description	100mm Vice	150mm Vice
A – Between towers	100mm (3.4")	125mm (4.4")
B – Max. Double-station	180mm (7.1")	225mm (8.9")
C – Max. Single-station	380mm (15")	480mm (18.9")



\* Hydraulic option.  
Part numbers in **bold face** are in-stock items.